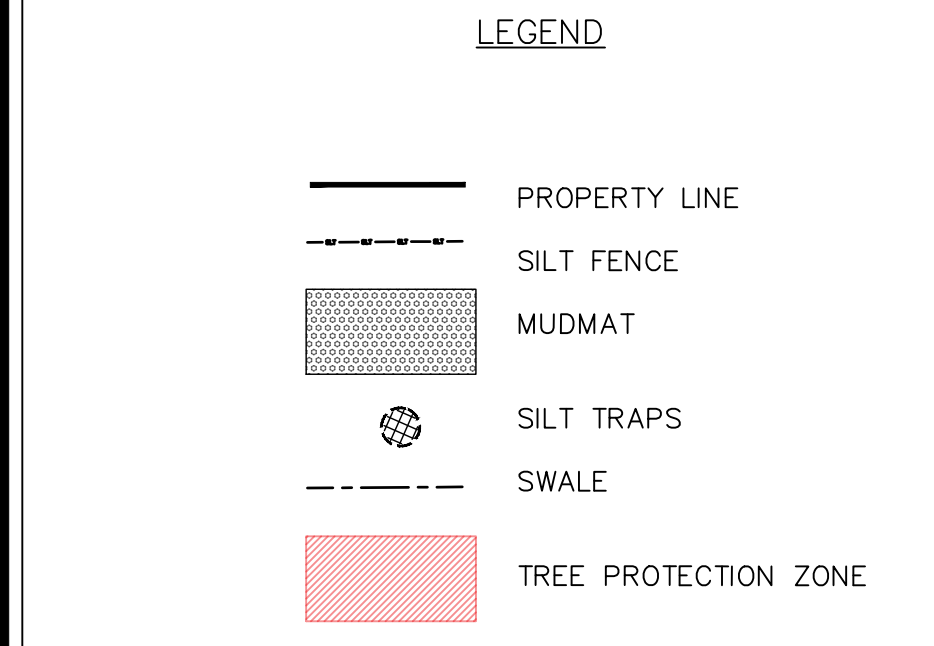
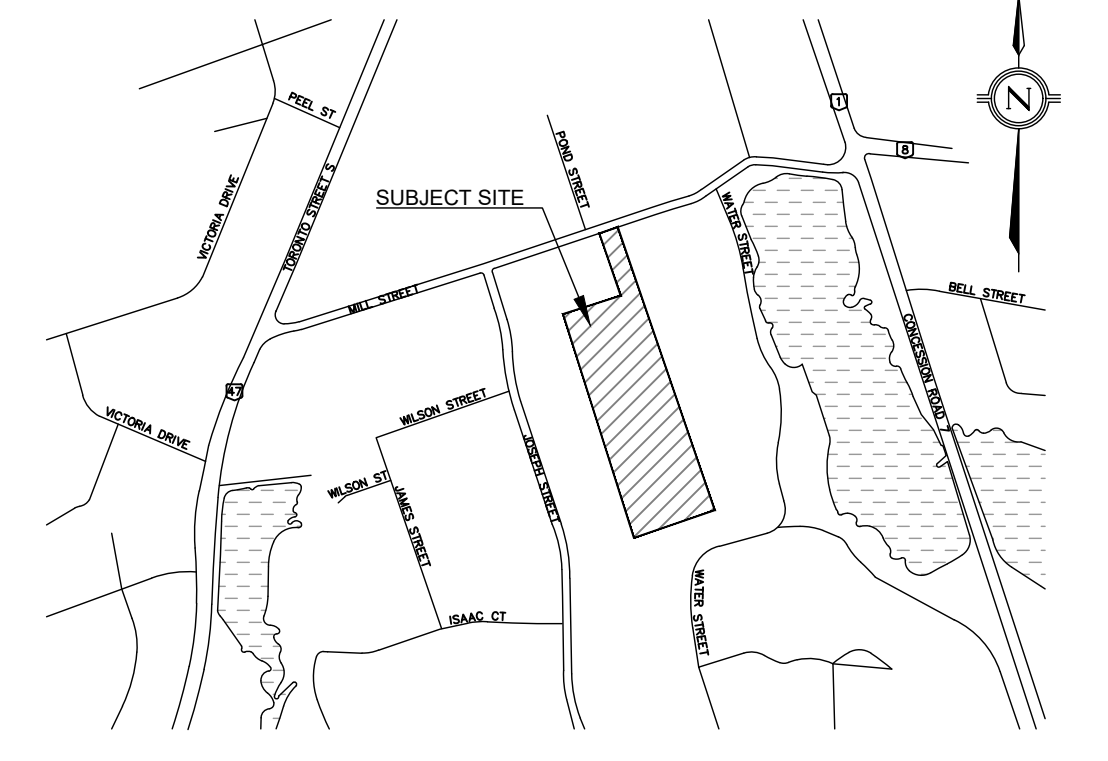


01
ESC-01 SEDIMENT CONTROL - MUD MAT
AS PER THE 'GREATER GOLDEN HORSESHOE' ERS CONTROL GUIDELINE

counterpoint
ENGINEERING INC.



LEGAL & TOPOGRAPHY
PROVIDED BY: SCHAEFFER DZALDOV BENNETT LTD.
64 JARDIN DRIVE
CONCORD, ON, L4K 3P3
PHONE: (416) 987-0101

BENCHMARK AND ELEVATION
ELEVATIONS SHOWN HEREON ARE GEODETIC (CGVD-1928 - PRE-1978 ADJUSTMENT) AND ARE REFERRED TO MINISTRY OF TRANSPORTATION OF ONTARIO BENCHMARK No. 00819778487, HAVING A PUBLISHED ELEVATION OF 274.359 METERS.

1.	2ND SPA SUBMISSION	2021/06/25	PT
No.	REVISIONS/ISSUED	DATE	BY CITY

counterpoint ENGINEERING
COUNTERPOINT ENGINEERING INC.
8395 Jane St., Suite 100, Vaughan, ON L4K 5Y2 Phone 905.326.1404 Fax 905.326.1405

LAYFIELD
CATCH BASIN SEDIMENT TRAP BY NON-WOVEN GEOTEXTILE
LAYFIELD GIP
ALBERTA, CANADA

ENGINEER'S STAMP
P.A. Turner
100778687
PROVINCE OF ONTARIO

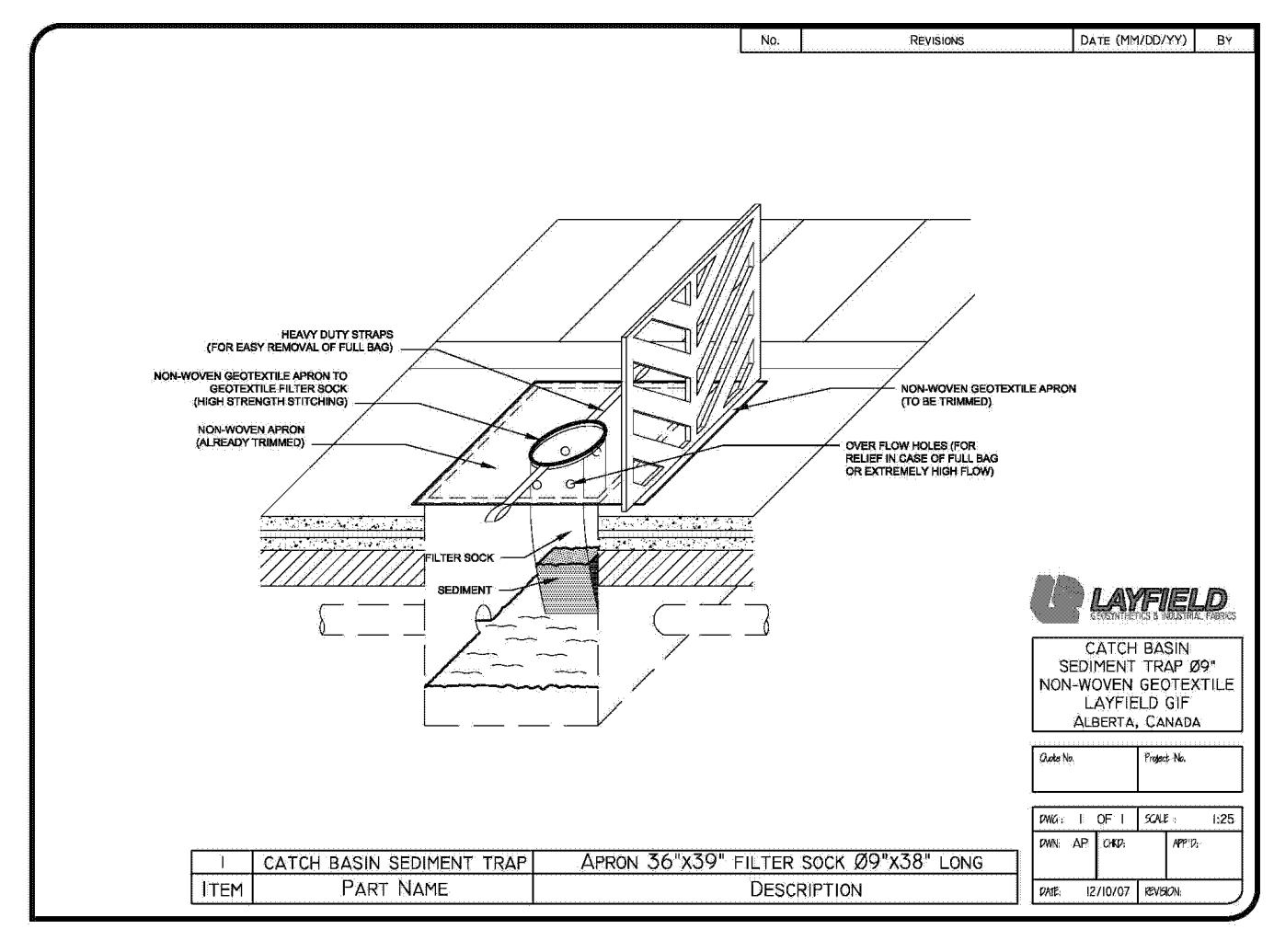
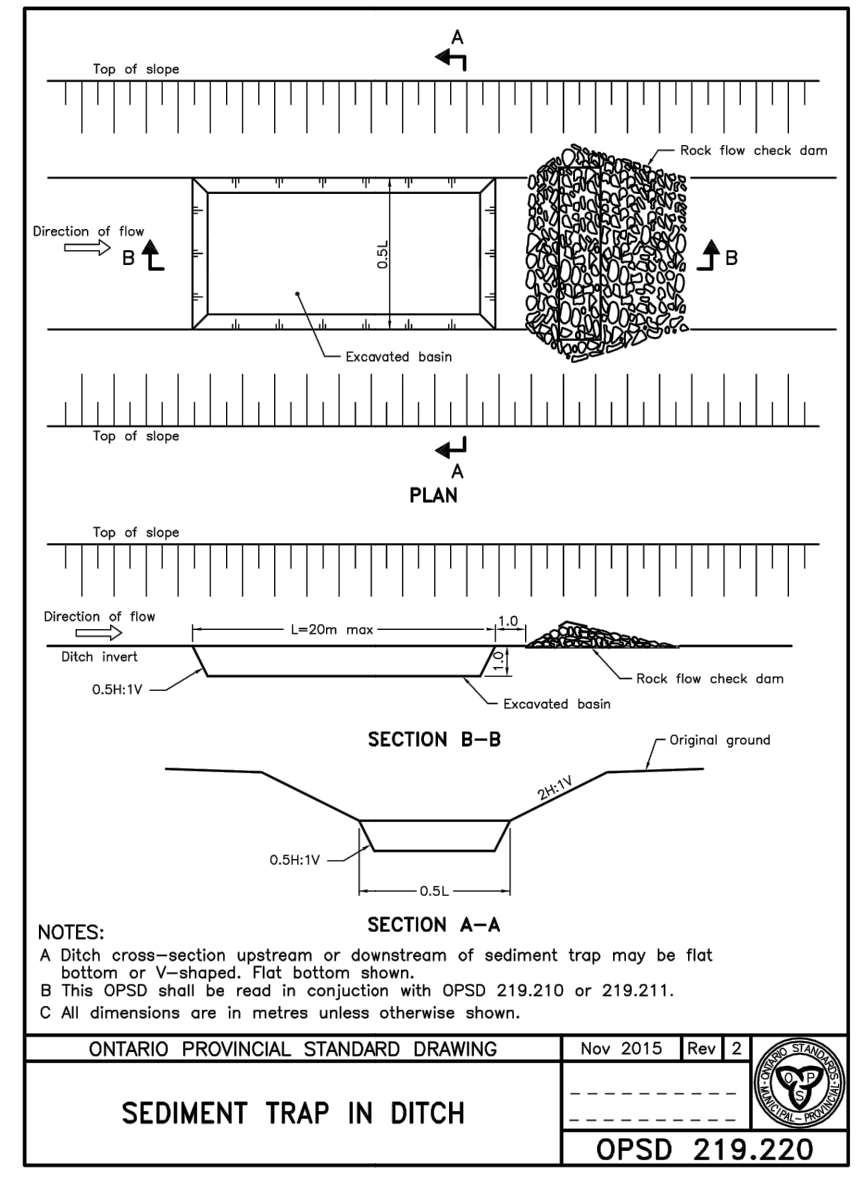
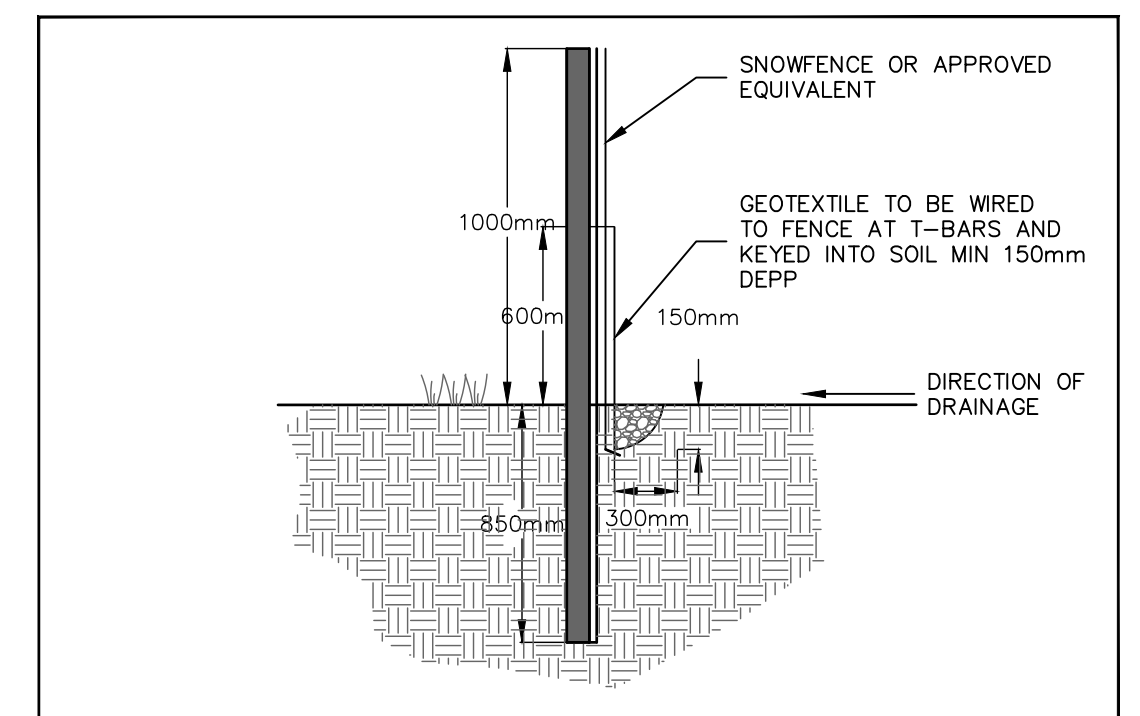
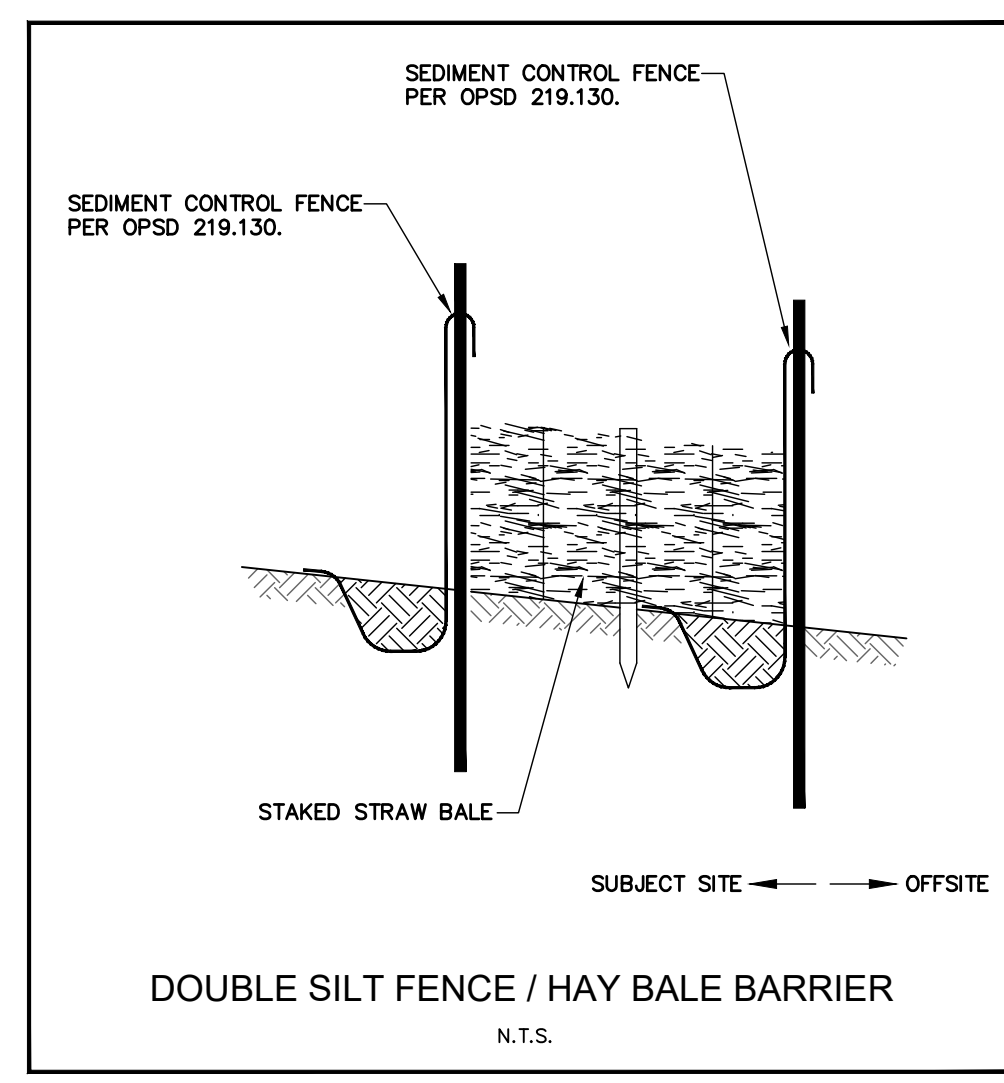
APPLICANT:
MOSAİK (UXBRIDGE) INC.

SITE LOCATION:
**62 MILL STREET
THE TOWNSHIP OF UXBRIDGE
L9P 1H9, ONTARIO**

SITE PLAN FILE No.:

**EROSION & SEDIMENT CONTROL PLAN
(EARTHWORKS)**

DESIGNED BY: SS	CHECKED BY: PT	DATE: JUNE 2021
DRAWING BY: SC	CHECKED BY: PT	PROJECT NO. 20128
SCALE: 1:500m	CHECKED BY: PT	DRAWING NO. ESC-01



counterpoint
ENGINEERING INC.

SEDIMENT CONTROL FENCE
SCALE: N.T.S.

ONTARIO PROVINCIAL STANDARD DRAWING
Nov 2015 Rev. 2
SEDIMENT TRAP IN DITCH
OPSD 219.220

LAYFIELD
CATCH BASIN SEDIMENT TRAP BY NON-WOVEN GEOTEXTILE
LAYFIELD GIP
ALBERTA, CANADA