

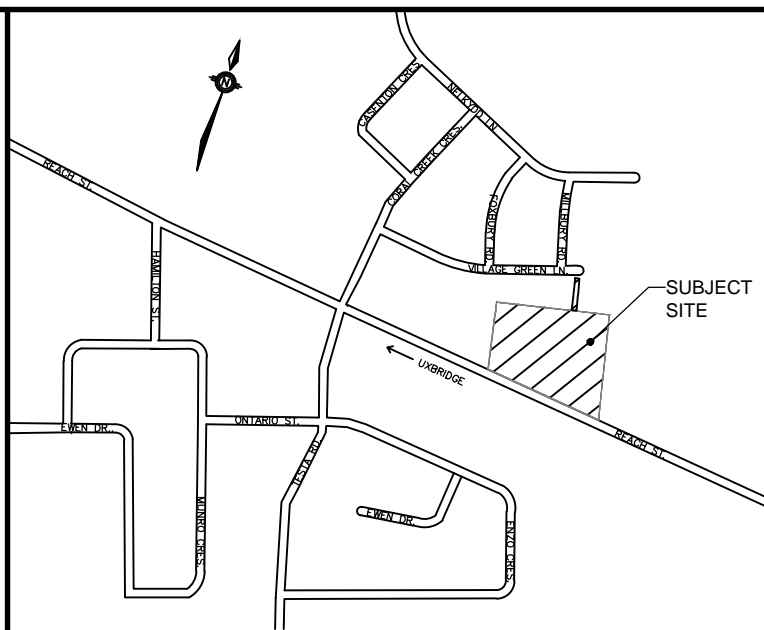
GENERAL NOTES

EROSION & SILTATION CONTROL PLAN NOTES

1. SILTATION CONTROL FENCE IS TO BE INSTALLED PRIOR TO ANY CONSTRUCTION WORKS.
2. SILTATION CONTROL FENCE THAT IS EXTERNAL TO THE PROPERTY IS TO BE REMOVED ONCE THE EXTERNAL GRADING IS STABILIZED.
3. LOCATIONS OF SILT FENCES IS APPROXIMATE. EXACT LOCATION IS TO BE DETERMINED ON-SITE BY THE CONTRACTOR IN CONSULTATION WITH THE ENGINEER AND THE OWNER.
4. ALL CONSTRUCTION VEHICLES TO ENTER AND LEAVE THE SITE AT APPROVED LOCATION ONLY.
5. CONTRACTOR SHALL BE RESPONSIBLE FOR MAINTAINING ALL SILTATION CONTROL DEVICES AND STRUCTURES IN GOOD WORKING CONDITION AT ALL TIMES. CONTRACTOR SHALL INSPECT SUCH DEVICES REGULARLY AND AFTER EACH RAINFALL EVENT.
6. LOT DRAINAGE SHALL BE DIRECTED TOWARDS TEMPORARY SILTATION CUT-OFF SWALES AS INDICATED ON THE DRAWINGS.
7. SEDIMENT TO BE REMOVED FROM BEHIND SILT FENCES WHEN IT IS A THIRD TO HALF WAY UP THE FILTER CLOTH.
8. IF UNDERGROUND SERVICES AND CONSTRUCTION DOES NOT PROCEED FOLLOWING ROUGH GRADING, THE AREA SHOULD BE STABILIZED WITH HYDROSEED WITHIN 30 DAYS AND LEFT IN AN UNDISTURBED CONDITION.
9. TEMPORARY CATCHBASIN SILTATION CONTROL DEVICES SHALL BE INSTALLED IN ALL ROADWAY CATCHBASINS AS PER "TEMPORARY SILTSACK SEDIMENT CONTROL FILTER FOR CATCHBASIN" DETAIL ON ESC-5 DWG.
9. TEMPORARY CATCHBASIN SILTATION CONTROL DEVICES SHALL BE INSTALLED IN ALL REARLOT CATCHBASINS AS PER "TEMPORARY RLCB SEDIMENT TRAP COVER" AND "REARYARD CATCHBASIN SILTATION TRAP" DETAILS ON ESC-5 DWG.
10. EXISTING VEGETATION SHALL NOT BE IMPACTED BY THE INSTALLATION OR EROSION/SEDIMENTATION CONTROL DEVICES.

CONSTRUCTION PROGRAM

1. INSTALL SEDIMENT CONTROL FENCE PER DETAIL ON ESC-2 DWG. SEDIMENT CONTROL FENCE TO BE MAINTAINED IN GOOD WORKING CONDITION DURING CONSTRUCTION.
2. REMOVE VEGETATION INTERNAL OF THE SEDIMENT FENCE AS DIRECTED BY CONSULTING ENGINEERS.
3. DEMOLISH EXISTING STRUCTURES AND DECOMMISSION EXISTING WELLS ACCORDINGLY AND DISPOSE OF OFF SITE ACCORDING TO REGULATIONS.
4. INSTALL MUD-MAT AT LOCATION SHOWN ON ESC-2 DWG. MUD-MAT TO BE MAINTAINED IN GOOD WORKING CONDITION DURING CONSTRUCTION.
5. THE SEDIMENT CONTROLS AND SWALES ARE TO BE KEPT IN OPERATION UNTIL FINE GRADING AND SODDING OF DISTURBED AREAS IS COMPLETED. AS THE DEVELOPMENT NEARS COMPLETION WITH SURFACE STABILIZATION CONSISTING OF PAVEMENT, DWELLING UNITS AND SODDED AREA, THE TEMPORARY SEDIMENT CONTROL MEASURES CAN BE REDUCED PROPORTIONALLY.
7. THE CATCHBASIN SILTATION CONTROL DEVICES PER ESC-2 DWG ARE TO REMAIN UNTIL FINE GRADING AND SODDING IS COMPLETED.
8. ALL CATCHBASINS LOCATED WITHIN ROADWAYS ARE TO HAVE SILTATION CONTROL TRAPS INSTALLED PER DETAIL PRESENTED ON DRAWING ESC-2.
9. ALL REARYARD CATCHBASINS LOCATED OUTSIDE OF ROADWAYS ARE TO HAVE SILTATION CONTROL TRAPS INSTALLED PER DETAILS PRESENTED ON DRAWING ESC-2.
10. ONCE WORKS ARE COMPLETED, REMOVE MUD-MAT AND DISPOSE OFF SITE.



LEGEND:

- SINGLE SEDIMENT FENCE: [Symbol]
- DOUBLE SEDIMENT FENCE: [Symbol]
- PROPOSED 3:1 SLOPING: [Symbol]
- PROPOSED ROCK CHECK DAM: [Symbol]
- PROPOSED OVERLAND FLOW ROUTE: [Symbol]
- EXISTING OVERLAND FLOW ROUTE: [Symbol]
- EXISTING TREE TO BE REMOVED PROVIDED BY COSBURN NAUBORIS LTD: [Symbol]
- EXISTING TREE TO BE PRESERVED PROVIDED BY COSBURN NAUBORIS LTD: [Symbol]
- MUDMAT PER DETAIL: [Symbol]
- INTERIM ESC SWALE: [Symbol]
- CATCHBASIN SILT TRAP PER DETAIL DESCRIBED ON DRAWING ESC 1 AND SPECIFIED ON DETAIL ON DRAWING ESC-5: [Symbol]

REVIEWED BY: _____
 TOWNSHIP OF UXBRIDGE
 DATE: _____
 TOWNSHIP ENGINEER FOR THE TOWNSHIP OF UXBRIDGE

APPROVED BY: _____
 REGION OF DURHAM
 DATE: _____

BENCHMARK:
 ELEVATIONS ARE GEODETIC AND REFERRED TO THE MTO MONUMENT NO. 778488. ELEVATION = 267.903 M.

NOTE: ALL DIMENSIONS AND ELEVATIONS IN METRES UNLESS NOTED OTHERWISE. ALL PIPE SIZES IN MILLIMETRES.

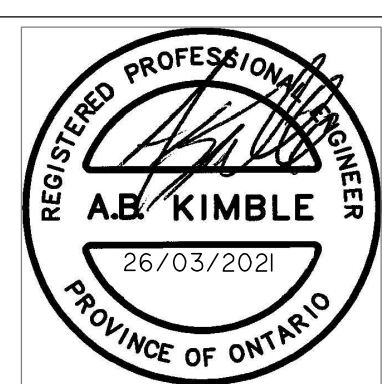
No.	REVISIONS TO DRAWING	BY	DATE	APPR.
ALL PREVIOUS ISSUES OF THIS DRAWING ARE SUPERSEDED				

CLIENT: **VENETIAN GROUP**

MUNICIPALITY: **TOWNSHIP OF UXBRIDGE
REGION OF DURHAM**

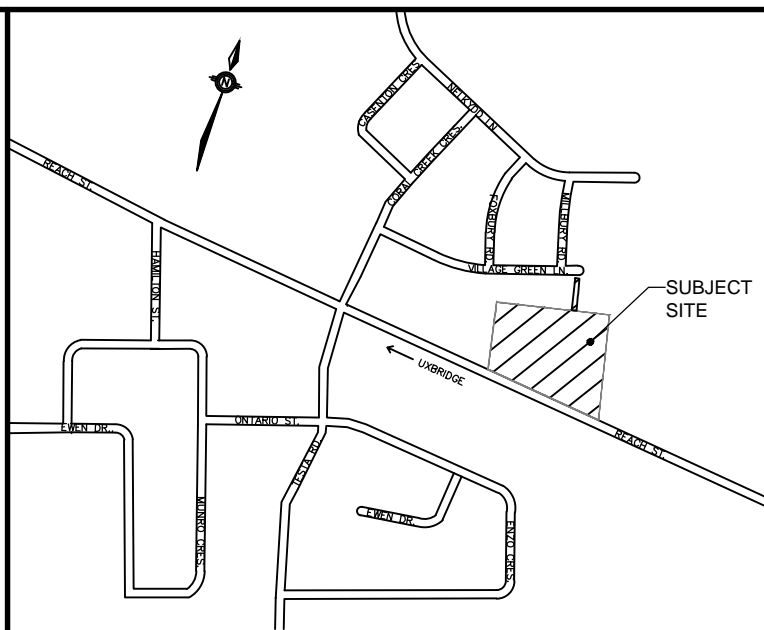
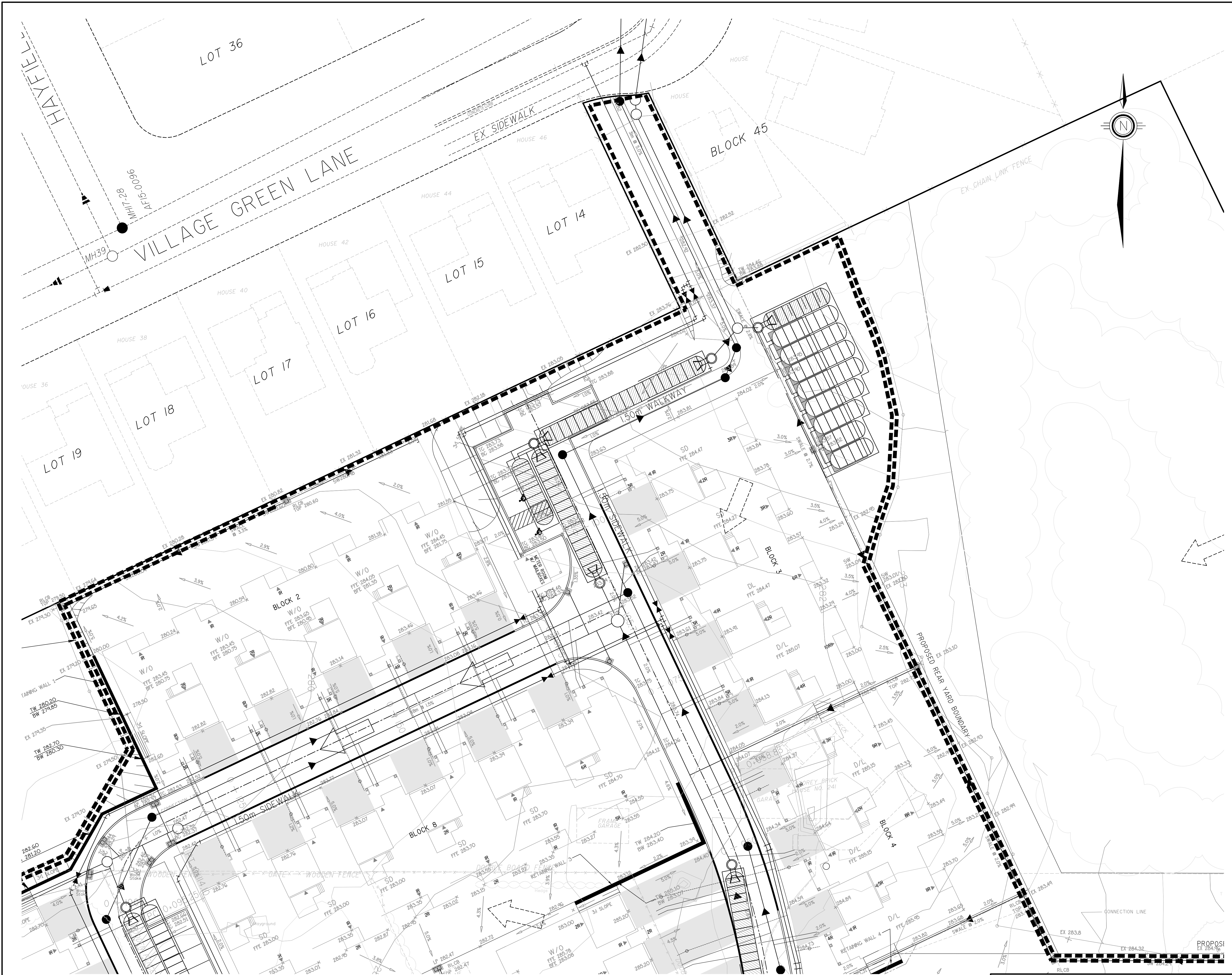
PROJECT TITLE: **REACH STREET LANDS**

SHEET TITLE: **EROSION AND SEDIMENT CONTROL PLAN**



DESIGNED: KLD	DRAWN: RAV	CHECKED: ABK
SCALE: 1:500	DATE: DECEMBER 2021	DWG. NUMBER: ESC-1
PROJECT NUMBER: 17:386		

CAD FILE: P:\17\386\Drawing Files\Phase 3\Submission Drawing\386 - ESC Drawings.dwg



LEGEND:

- SINGLE SEDIMENT FENCE: [Symbol]
- DOUBLE SEDIMENT FENCE: [Symbol]
- PROPOSED 3:1 SLOPING: [Symbol]
- PROPOSED ROCK CHECK DAM: [Symbol]
- PROPOSED OVERLAND FLOW ROUTE: [Symbol]
- EXISTING OVERLAND FLOW ROUTE: [Symbol]
- EXISTING TREE TO BE REMOVED PROVIDED BY COSBURN NAUBORIS LTD: [Symbol]
- EXISTING TREE TO BE PRESERVED PROVIDED BY COSBURN NAUBORIS LTD: [Symbol]
- MUDMAT PER DETAIL: [Symbol]
- INTERIM ESC SWALE: [Symbol]
- CATCHBASIN SILT TRAP PER DETAIL DESCRIBED ON DRAWING ESC-1 AND SPECIFIED ON DETAIL ON DRAWING ESC-5: [Symbol]

REVIEWED BY: _____
 TOWNSHIP OF UXBRIDGE
 DATE: _____
 TOWNSHIP ENGINEER FOR THE TOWNSHIP OF UXBRIDGE

APPROVED BY: _____
 REGION OF DURHAM
 DATE: _____

BENCHMARK:
 ELEVATIONS ARE GEODETIC AND REFERRED TO THE MTO MONUMENT NO. 778488, ELEVATION = 267.903 M.

NOTE: ALL DIMENSIONS AND ELEVATIONS IN METRES UNLESS NOTED OTHERWISE. ALL PIPE SIZES IN MILLIMETRES.

No.	REVISIONS TO DRAWING	BY	DATE	APPR.

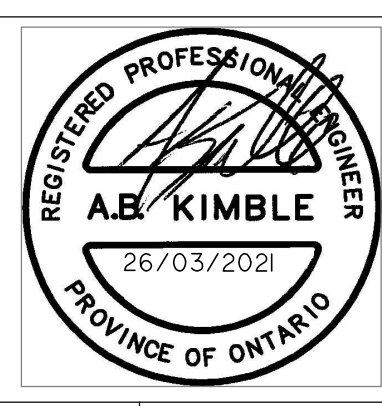
ALL PREVIOUS ISSUES OF THIS DRAWING ARE SUPERSEDED

CLIENT: **VENETIAN GROUP**

MUNICIPALITY: **TOWNSHIP OF UXBRIDGE
REGION OF DURHAM**

PROJECT TITLE: **REACH STREET LANDS**

SHEET TITLE: **EROSION AND SEDIMENT CONTROL PLAN - NORTH**



DESIGNED: KLD	DRAWN: RAV	CHECKED: ABK
SCALE: SCALE 1:250	DATE: DECEMBER 2021	PROJECT NUMBER: 17:386
DWG. NUMBER: 17:386		ESC-2

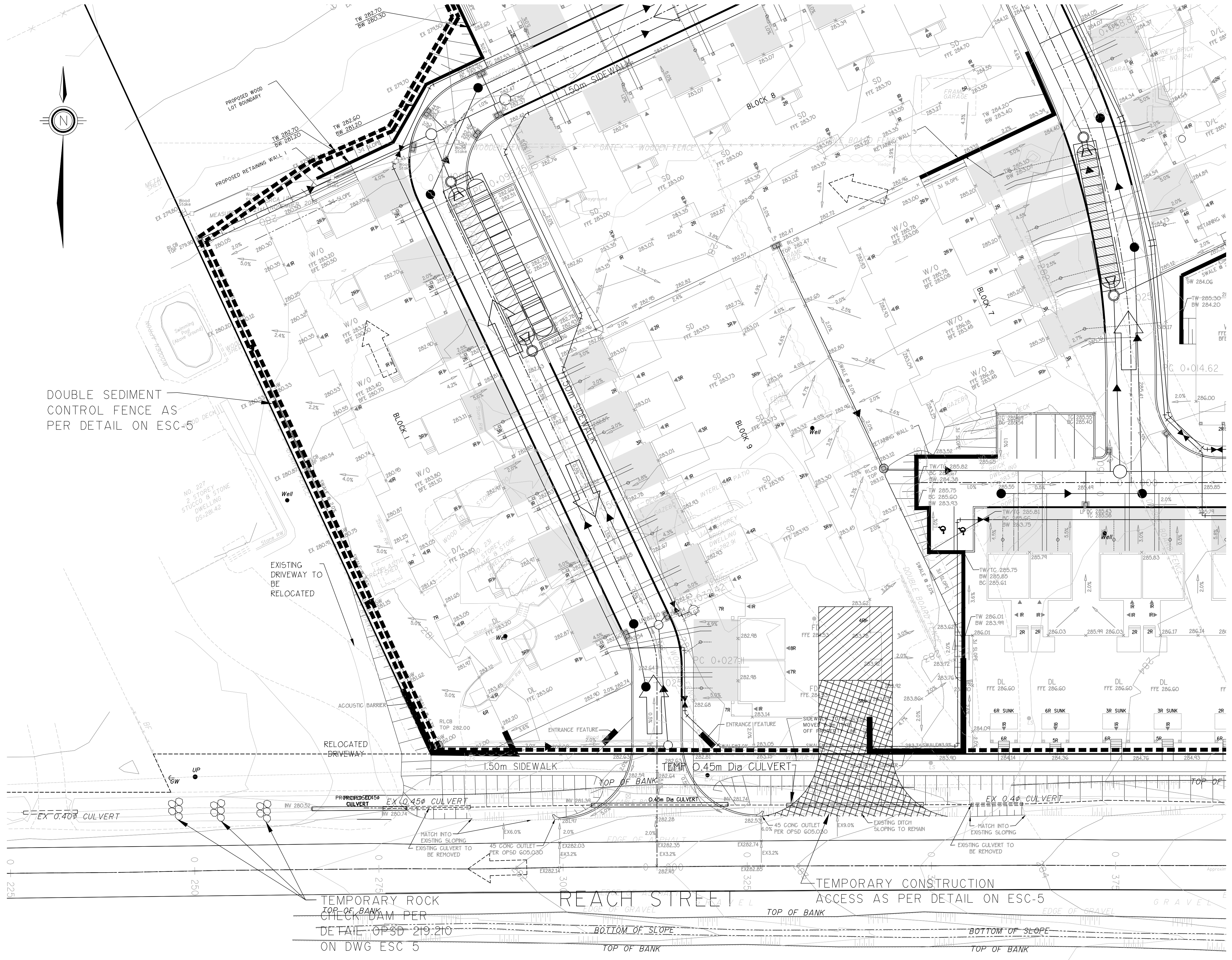
FOR ESC CONTINUATION REFER TO DWG No. ESC-3

FOR ESC CONTINUATION REFER TO DWG No. ESC-4

NOTE:
 SEE ESC-1 FOR GENERAL AND CONSTRUCTION NOTES.
 SEE ESC-5 FOR TECHNICAL DETAILS.

T-Number

FOR ESC CONTINUATION
REFER TO DWG No. ESC-2



DOUBLE SEDIMENT CONTROL FENCE AS PER DETAIL ON ESC-5

EXISTING DRIVEWAY TO BE RELOCATED

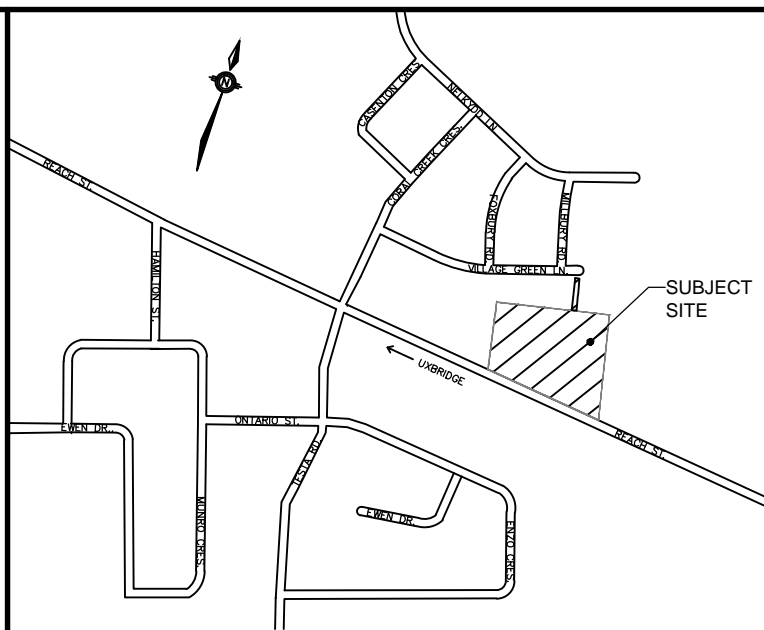
RELOCATED DRIVEWAY

TEMPORARY ROCK CHECK DAM PER DETAIL OF PSD 219.210 ON DWG ESC 5

REACH STREET

TEMPORARY CONSTRUCTION ACCESS AS PER DETAIL ON ESC-5

NOTE:
SEE ESC-1 FOR GENERAL AND CONSTRUCTION NOTES.
SEE ESC-5 FOR TECHNICAL DETAILS.



KEYMAP N.T.S.

LEGEND:

- SINGLE SEDIMENT FENCE [Symbol]
- DOUBLE SEDIMENT FENCE [Symbol]
- PROPOSED 3:1 SLOPING [Symbol]
- PROPOSED ROCK CHECK DAM [Symbol]
- PROPOSED OVERLAND FLOW ROUTE [Symbol]
- EXISTING OVERLAND FLOW ROUTE [Symbol]
- EXISTING TREE TO BE REMOVED PROVIDED BY COSBURN NAUBORIS LTD [Symbol]
- EXISTING TREE TO BE PRESERVED PROVIDED BY COSBURN NAUBORIS LTD [Symbol]
- MUDMAT PER DETAIL [Symbol]
- INTERIM ESC SWALE [Symbol]
- CATCHBASIN SILT TRAP PER DETAIL DESCRIBED ON DRAWING ESC 1 AND SPECIFIED ON DETAIL ON DRAWING ESC-5 [Symbol]

REVIEWED BY _____
TOWNSHIP OF UXBRIDGE
DATE _____
TOWNSHIP ENGINEER FOR THE TOWNSHIP OF UXBRIDGE

APPROVED BY _____
REGION OF DURHAM
DATE _____

BENCHMARK:
ELEVATIONS ARE GEODETIC AND REFERRED TO THE MTO MONUMENT NO. 778488, ELEVATION = 267.903 M.

NOTE: ALL DIMENSIONS AND ELEVATIONS IN METRES UNLESS NOTED OTHERWISE. ALL PIPE SIZES IN MILLIMETRES.

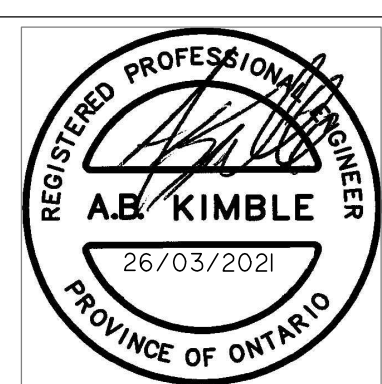
No.	REVISIONS TO DRAWING	BY	DATE	APPR.
ALL PREVIOUS ISSUES OF THIS DRAWING ARE SUPERSEDED				

CLIENT: **VENETIAN GROUP**

MUNICIPALITY: **TOWNSHIP OF UXBRIDGE
REGION OF DURHAM**

PROJECT TITLE: **REACH STREET LANDS**

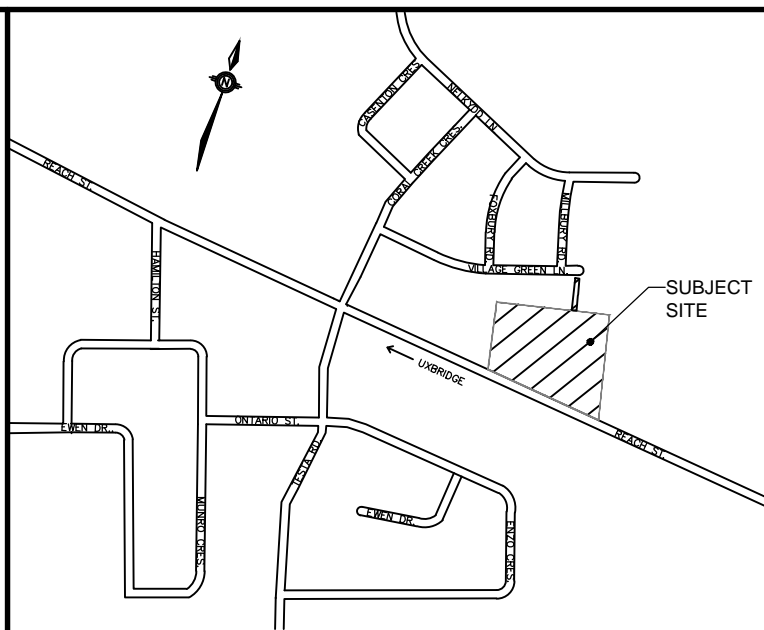
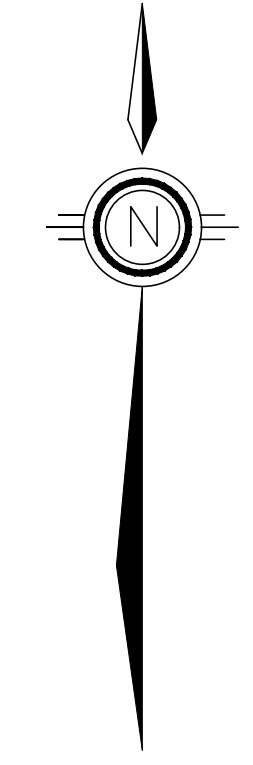
SHEET TITLE: **EROSION AND SEDIMENT CONTROL PLAN - WEST**



DESIGNED: KLD	DRAWN: RAV	CHECKED: ABK
SCALE: SCALE 1:250	DATE: DECEMBER 2021	
PROJECT NUMBER: 17:386	DWG. NUMBER: ESC-3	

T-Number

FOR ESC CONTINUATION
REFER TO DWG No. ESC-2



KEYMAP N.T.S.

LEGEND:

SINGLE SEDIMENT FENCE	
DOUBLE SEDIMENT FENCE	
PROPOSED 3:1 SLOPING	
PROPOSED ROCK CHECK DAM	
PROPOSED OVERLAND FLOW ROUTE	
EXISTING OVERLAND FLOW ROUTE	
EXISTING TREE TO BE REMOVED PROVIDED BY COSBURN NAUBORIS LTD	
EXISTING TREE TO BE PRESERVED PROVIDED BY COSBURN NAUBORIS LTD	
MUDMAT PER DETAIL	
INTERIM ESC SWALE	
CATCHBASIN SILT TRAP PER DETAIL DESCRIBED ON DRAWING ESC 1 AND SPECIFIED ON DETAIL ON DRAWING ESC-5	

REVIEWED BY
TOWNSHIP OF UXBRIDGE
DATE _____
TOWNSHIP ENGINEER FOR THE TOWNSHIP OF UXBRIDGE

APPROVED BY
REGION OF DURHAM
DATE _____

BENCHMARK:
ELEVATIONS ARE GEODETIC AND REFERRED TO THE MTO
MONUMENT NO. 778488, ELEVATION = 267.903 M.

NOTE: ALL DIMENSIONS AND ELEVATIONS IN METRES
UNLESS NOTED OTHERWISE. ALL PIPE SIZES IN MILLIMETRES.

No.	REVISIONS TO DRAWING	BY	DATE	APPR.

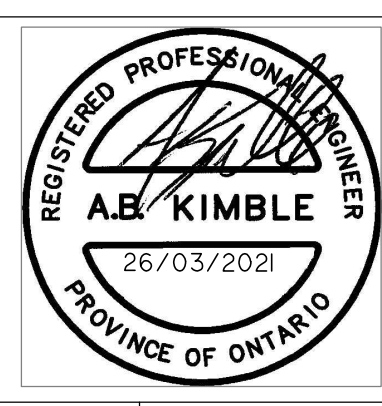
ALL PREVIOUS ISSUES OF THIS DRAWING ARE SUPERSEDED

CLIENT
VENETIAN GROUP

MUNICIPALITY
TOWNSHIP OF UXBRIDGE
REGION OF DURHAM

PROJECT TITLE
REACH STREET LANDS

SHEET TITLE
EROSION AND SEDIMENT CONTROL
PLAN - EAST



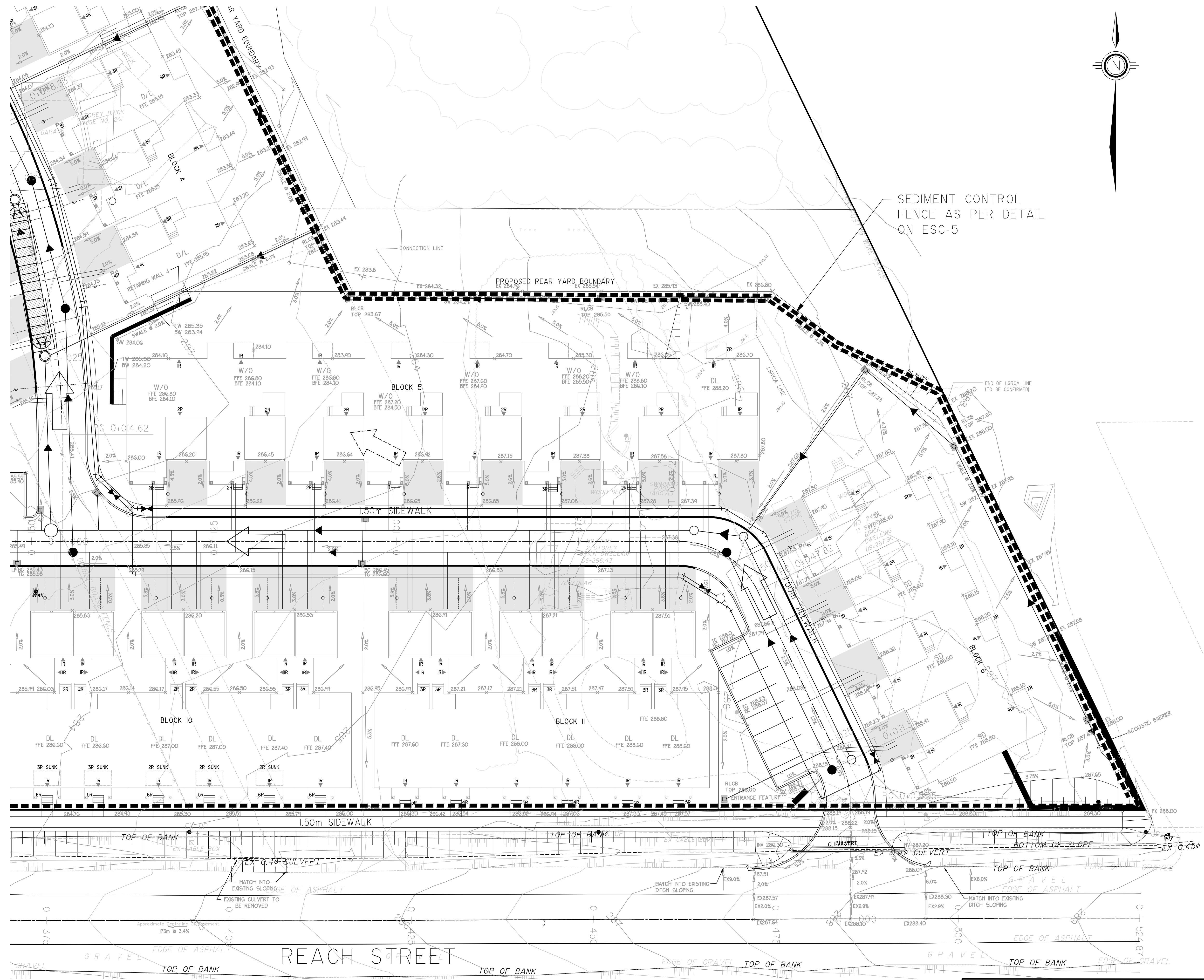
DESIGNED KLD DRAWN RAV CHECKED ABK
SCALE SCALE 1:250 DATE DECEMBER 2021
PROJECT NUMBER DWG. NUMBER

17:386 ESC-4

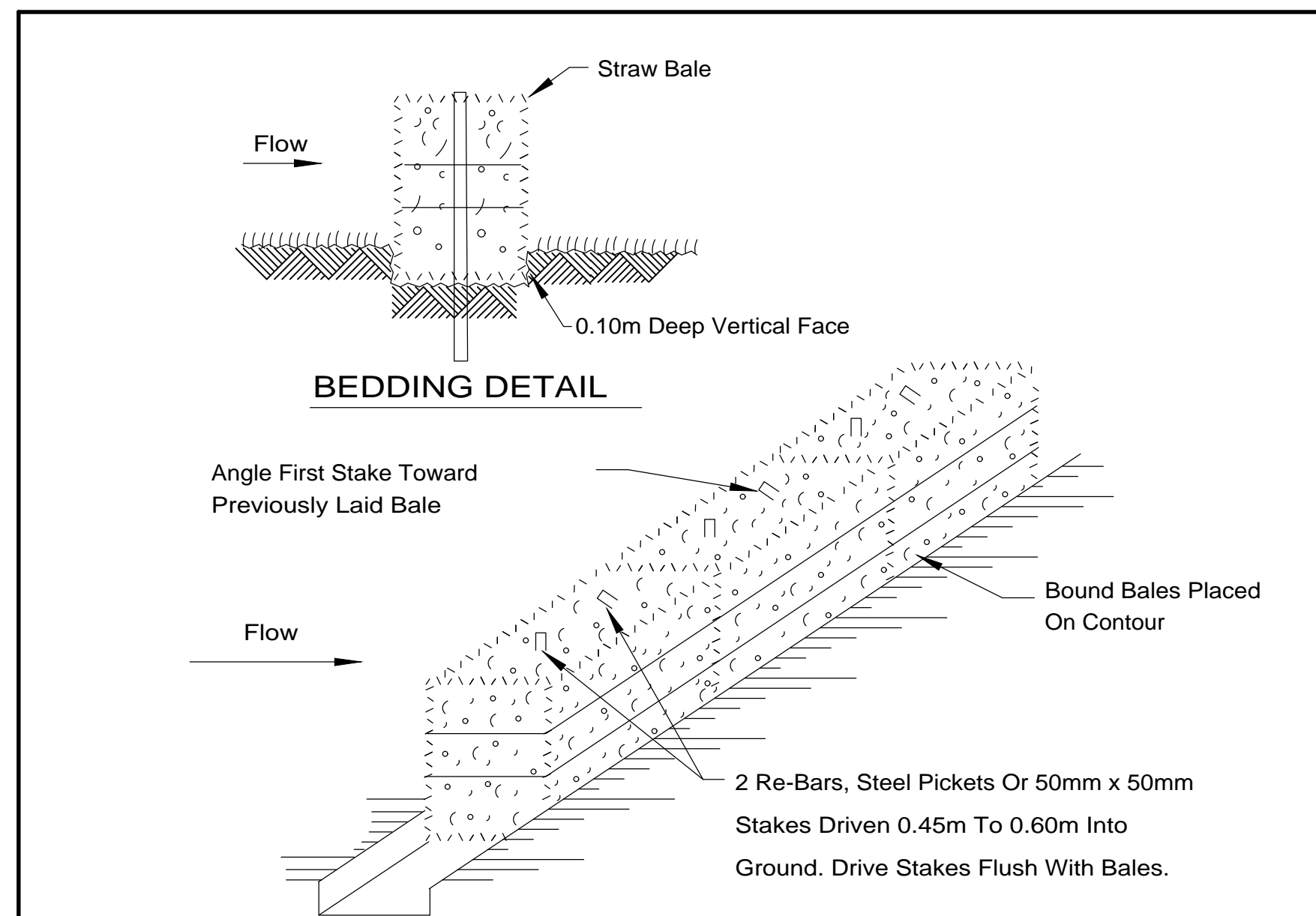
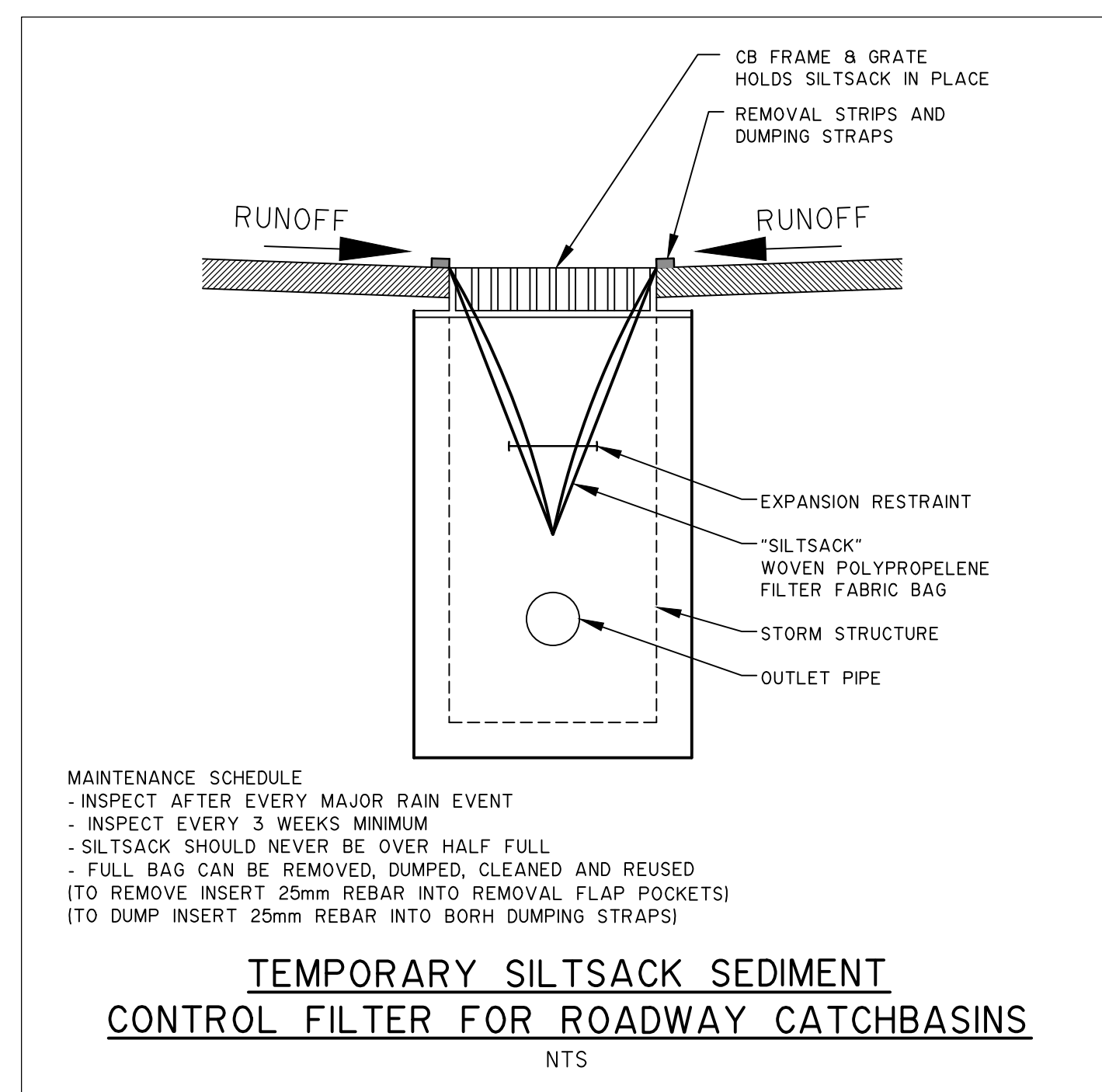
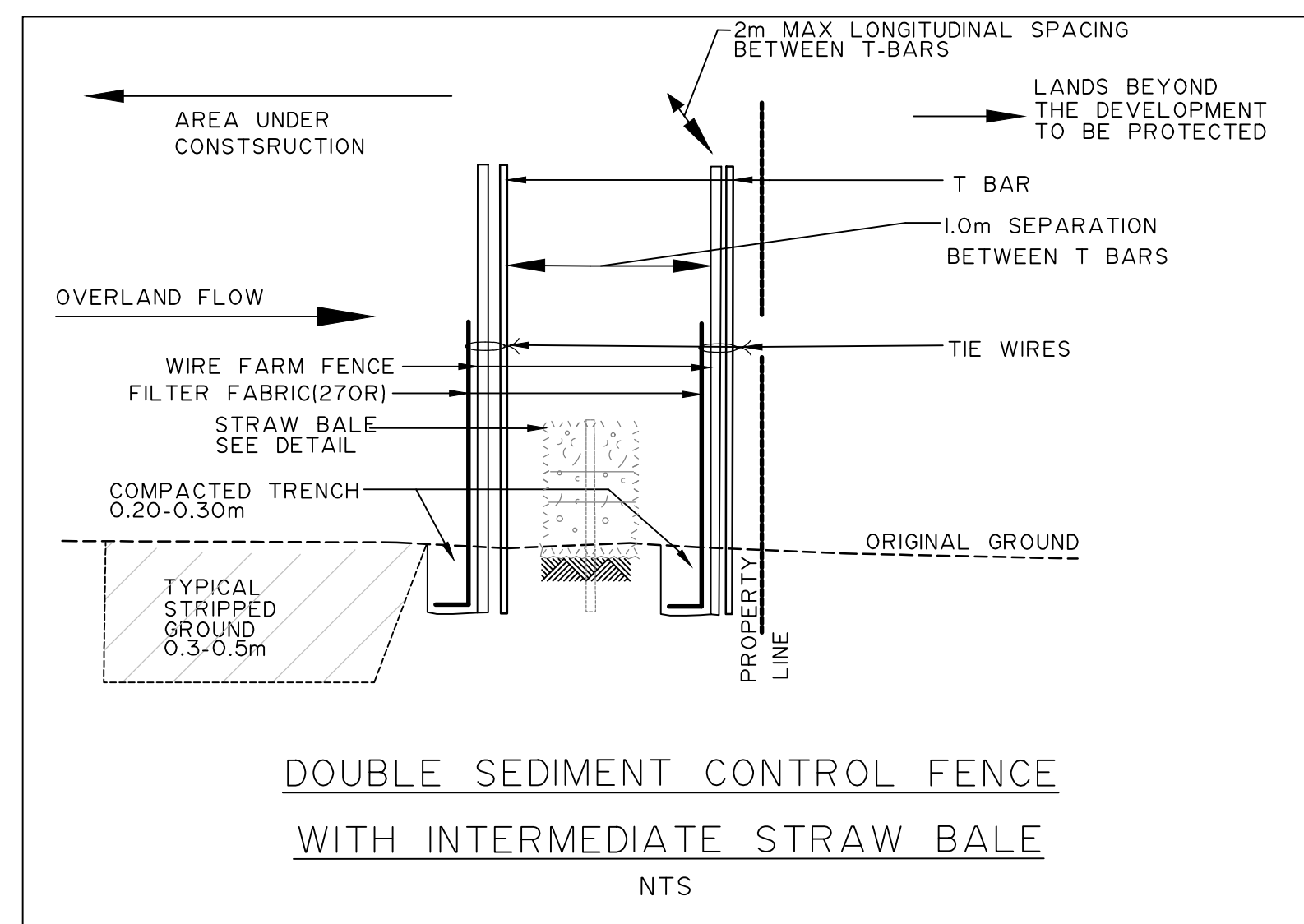
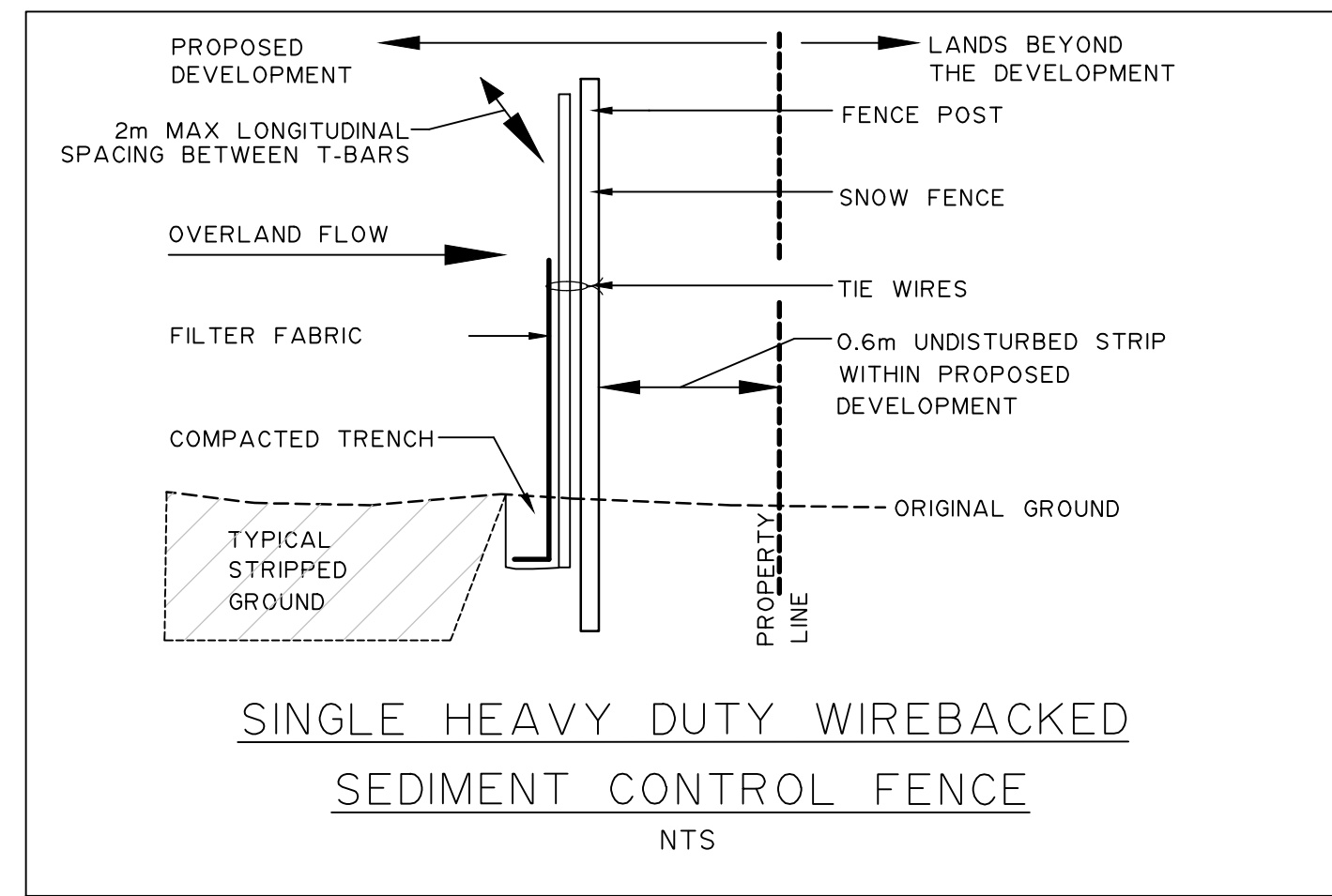
T-Number

SEDIMENT CONTROL
FENCE AS PER DETAIL
ON ESC-5

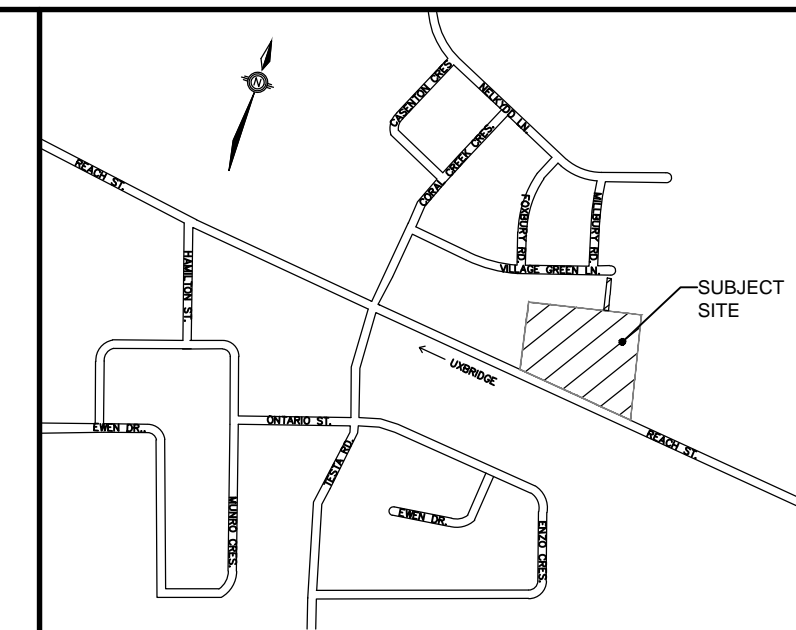
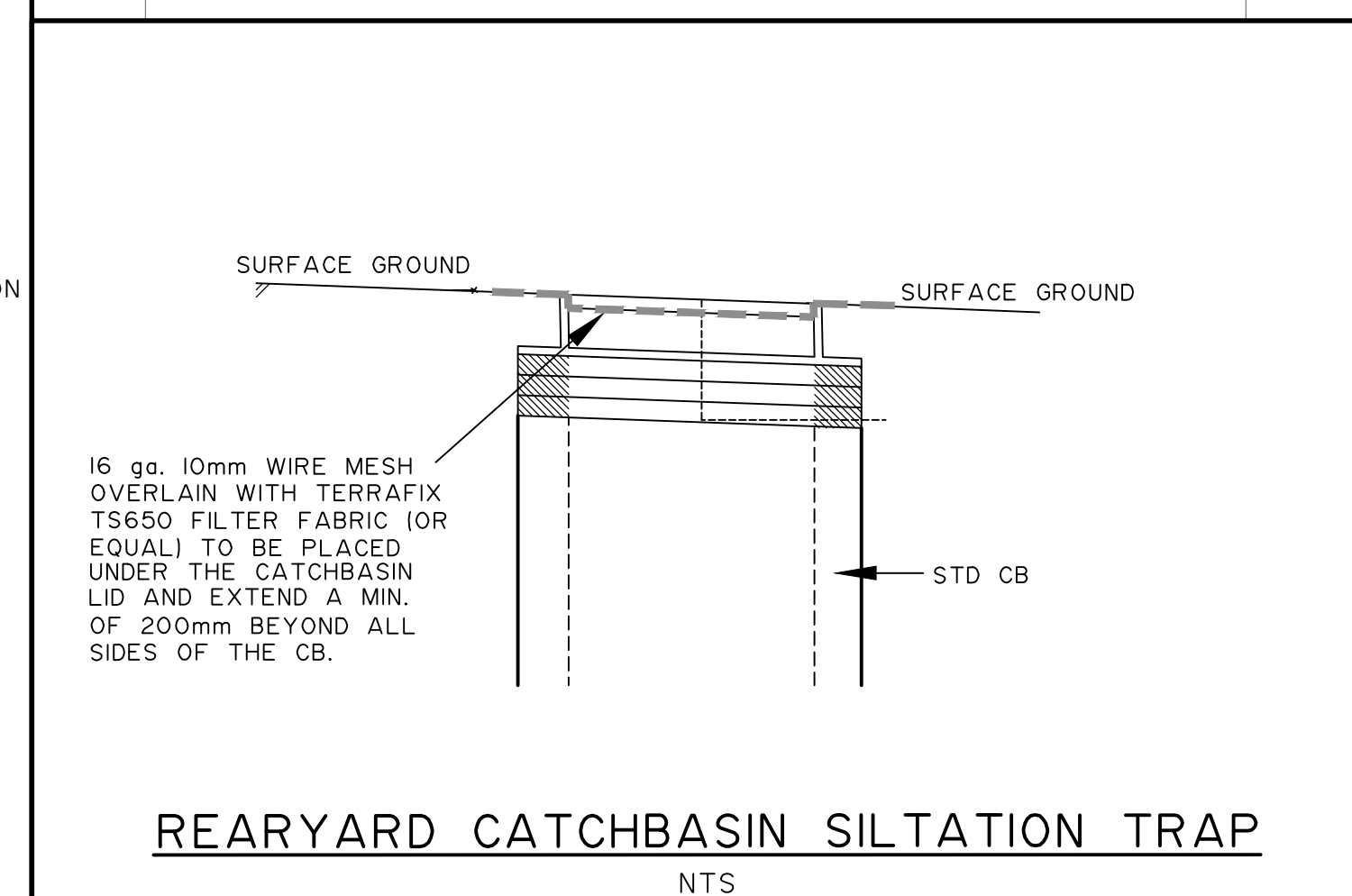
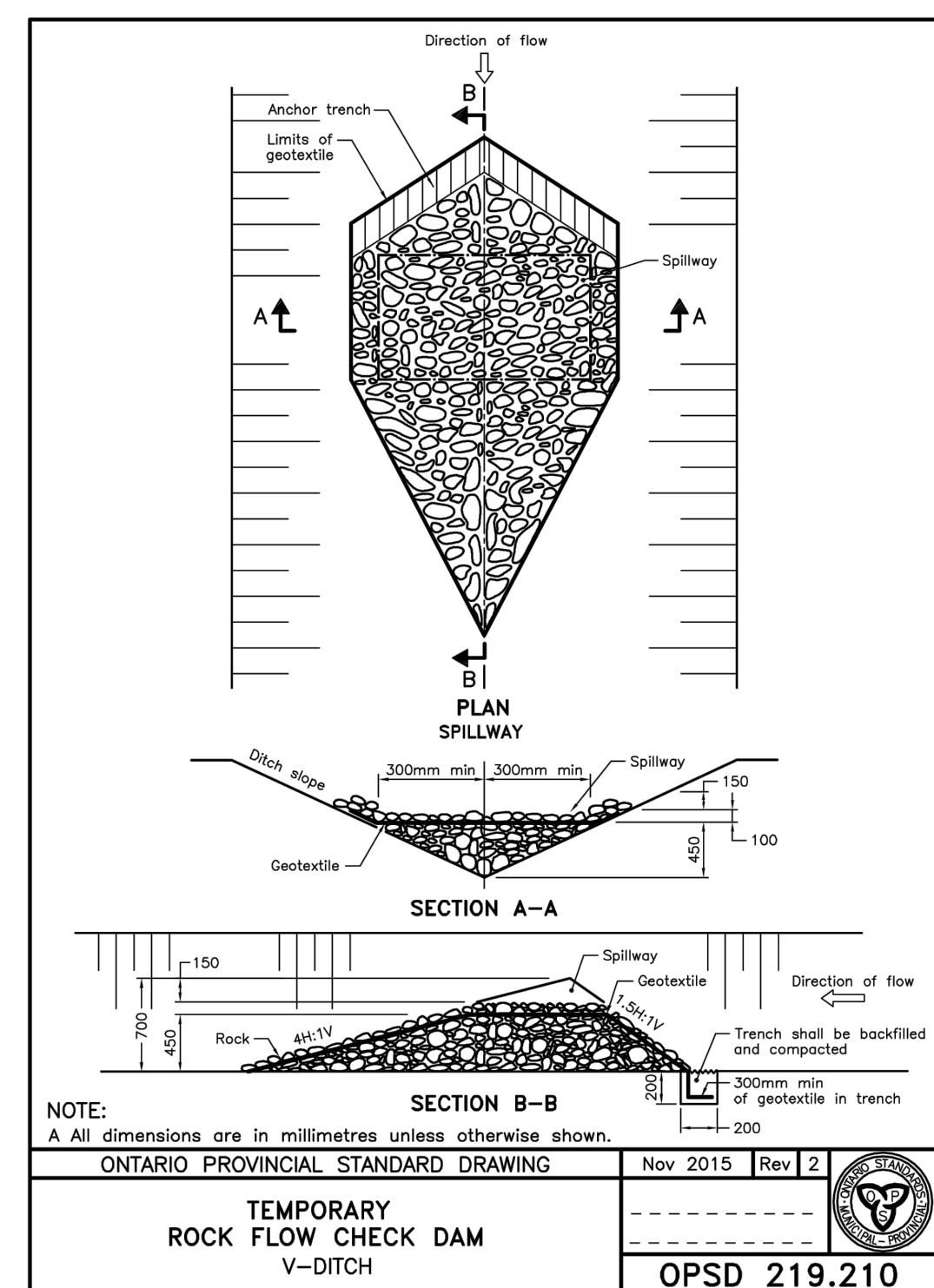
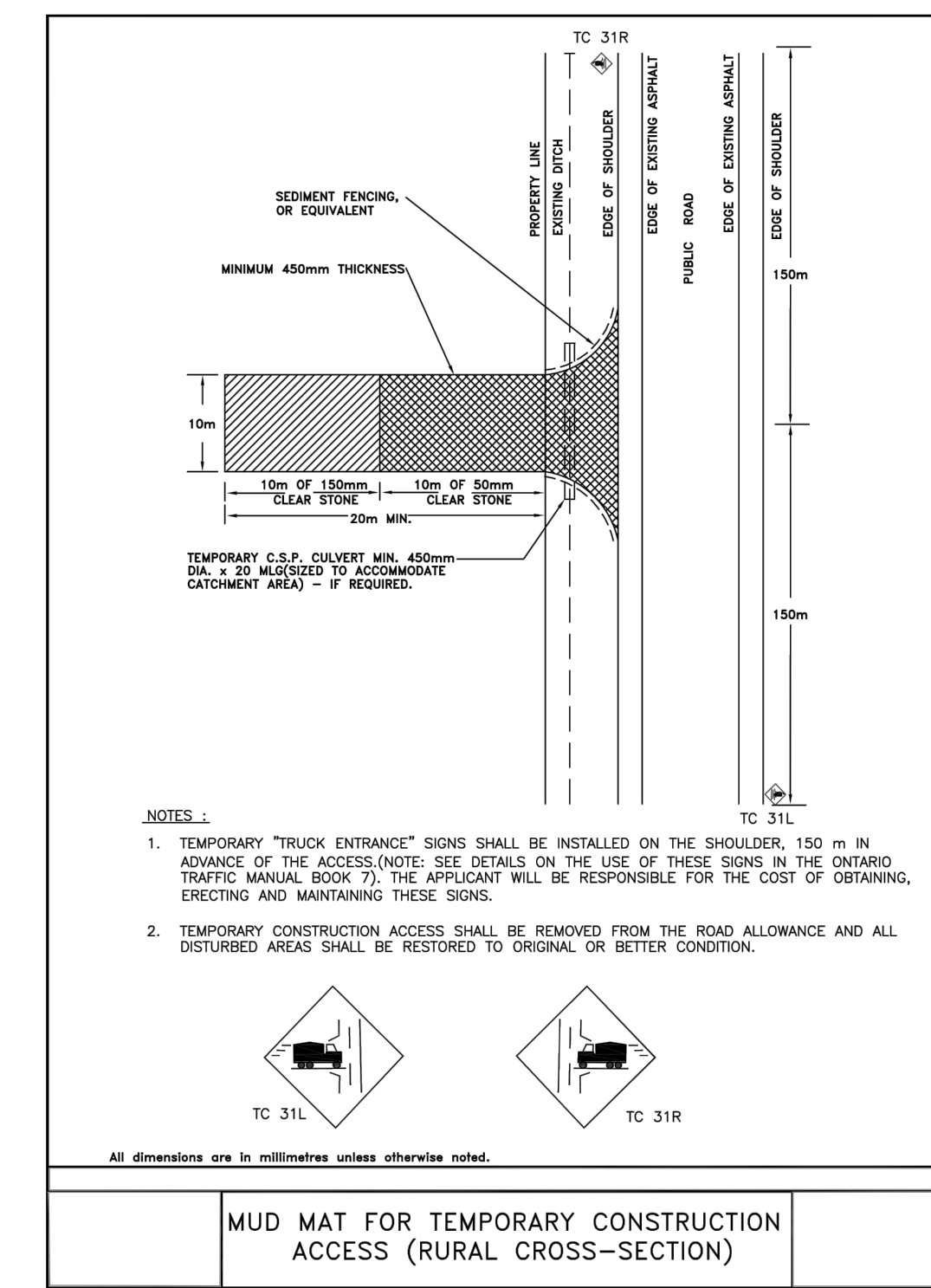
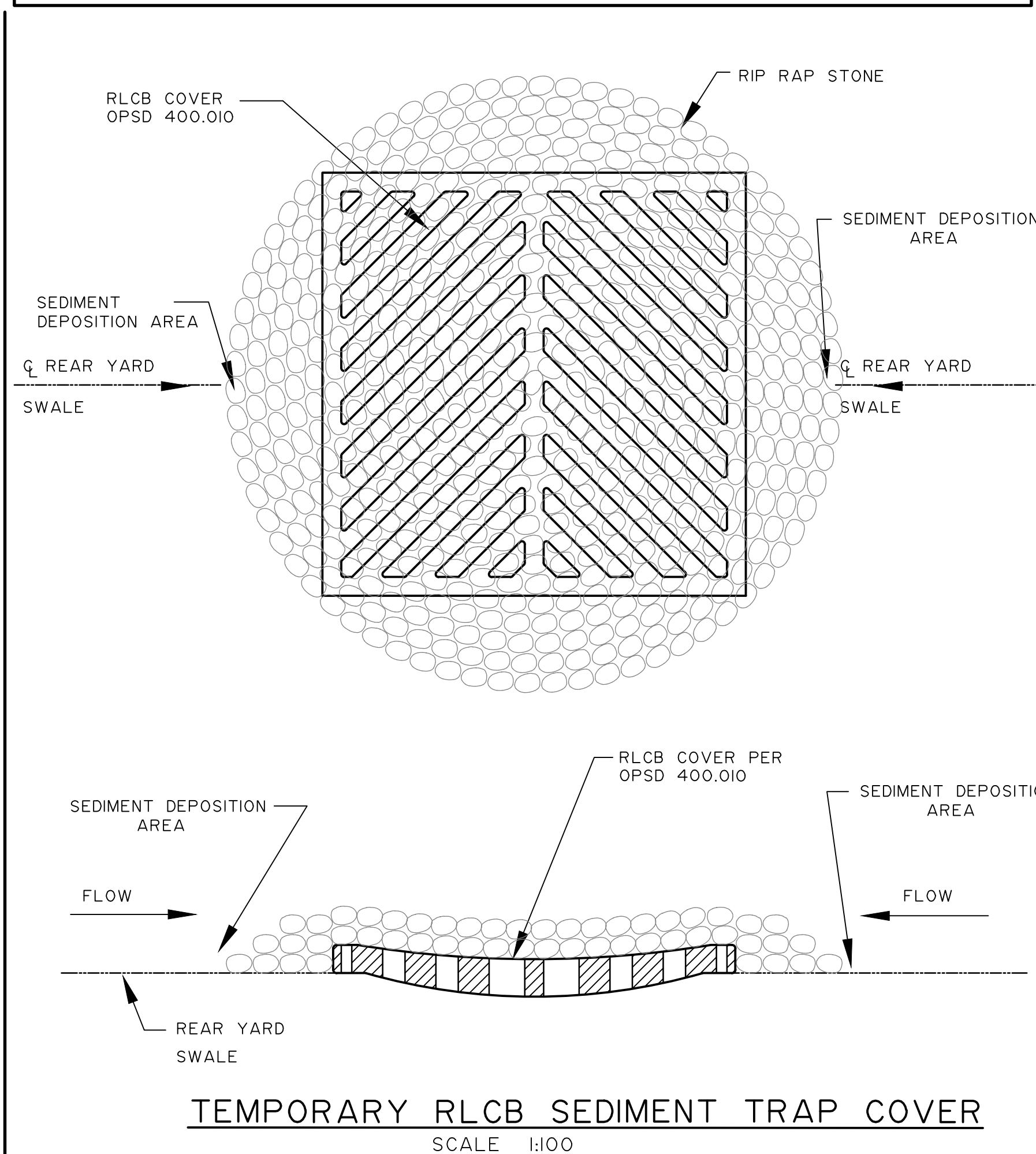
FOR ESC CONTINUATION
REFER TO DWG No. ESC-3



NOTE:
SEE ESC-1 FOR GENERAL AND CONSTRUCTION NOTES.
SEE ESC-5 FOR TECHNICAL DETAILS.



- NOTES**
1. Bales shall be placed at the top of slope or on the contour and in a row with ends tightly abutting the adjacent bales.
 2. Each bale shall be embedded in the soil a minimum of 4", and placed so that bindings are horizontal.
 3. Bales shall be securely anchored in place by either two stakes or re-bars driven through the bale. The first stake in each bale shall be driven toward the previously laid bale at an angle to force the bales together. Stakes shall be driven flush with the bale.
 4. Inspection shall be frequent and repair replacement shall be made promptly as needed.
 5. Bales shall be removed when they have served their usefulness so as not to block or impede storm flow or drainage.



REVIEWED BY _____
TOWNSHIP OF UXBRIDGE
DATE _____
TOWNSHIP ENGINEER FOR THE TOWNSHIP OF UXBRIDGE

APPROVED BY _____
REGION OF DURHAM
DATE _____

BENCHMARK:
ELEVATIONS ARE GEODETIC AND REFERRED TO THE MTO MONUMENT NO. 778488, ELEVATION = 267.903 M.

NOTE: ALL DIMENSIONS AND ELEVATIONS IN METRES UNLESS NOTED OTHERWISE. ALL PIPE SIZES IN MILLIMETRES.

No.	REVISIONS TO DRAWING	BY	DATE	APPR.

ALL PREVIOUS ISSUES OF THIS DRAWING ARE SUPERSEDED

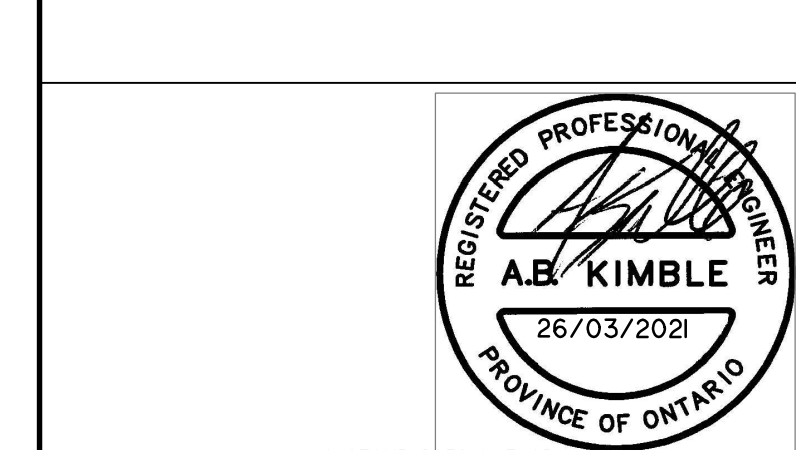
CLIENT
VENETIAN GROUP

MUNICIPALITY
TOWNSHIP OF UXBRIDGE
REGION OF DURHAM

PROJECT TITLE
REACH STREET LANDS

SHEET TITLE
EROSION AND SEDIMENT CONTROL DETAILS

SKA SABOURIN KIMBLE & ASSOCIATES LTD.
CONSULTING ENGINEERS



DESIGNED KLD DRAWN RAV CHECKED ABK
SCALE AS SHOWN DATE DECEMBER 2021
PROJECT NUMBER 17:386 DWG. NUMBER ESC-5

T-Number