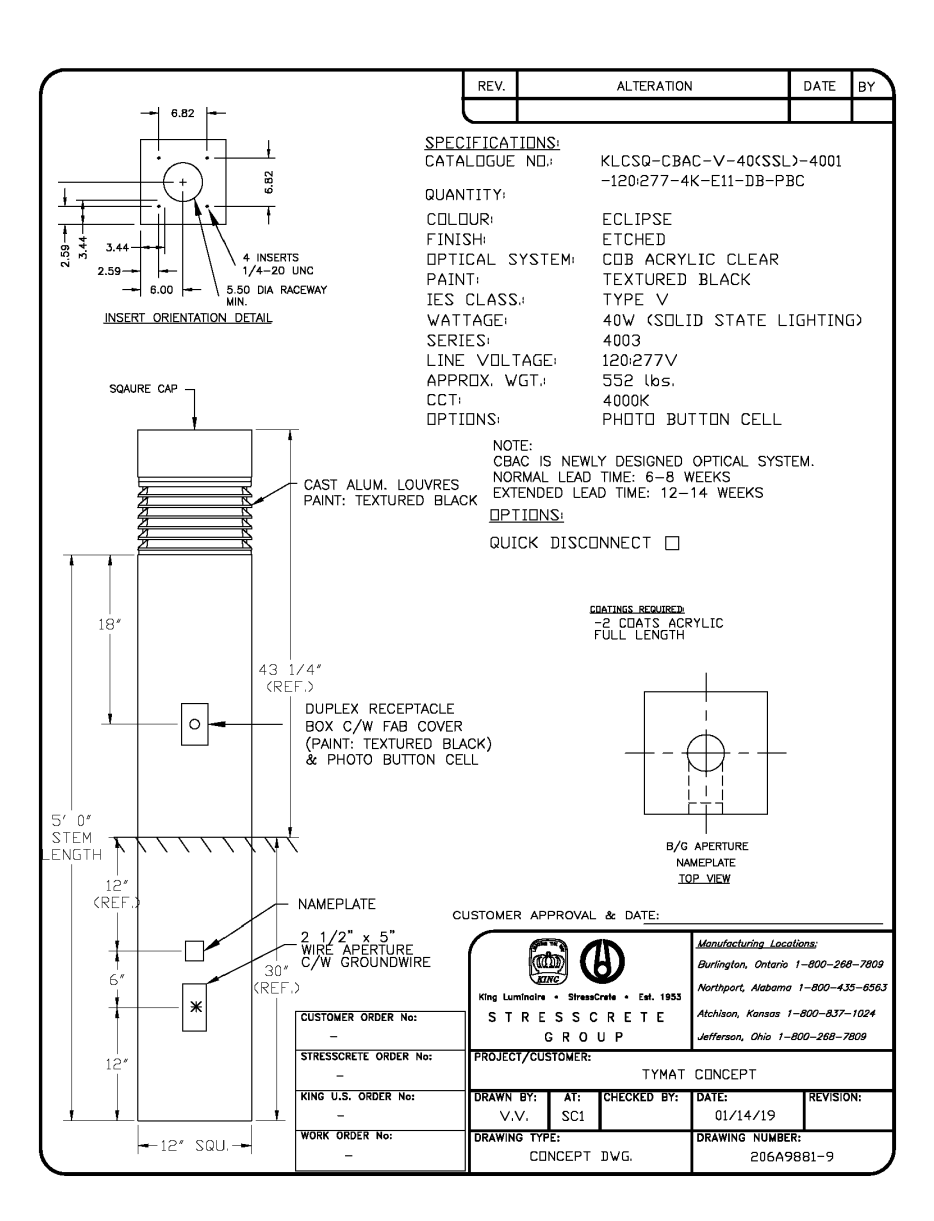
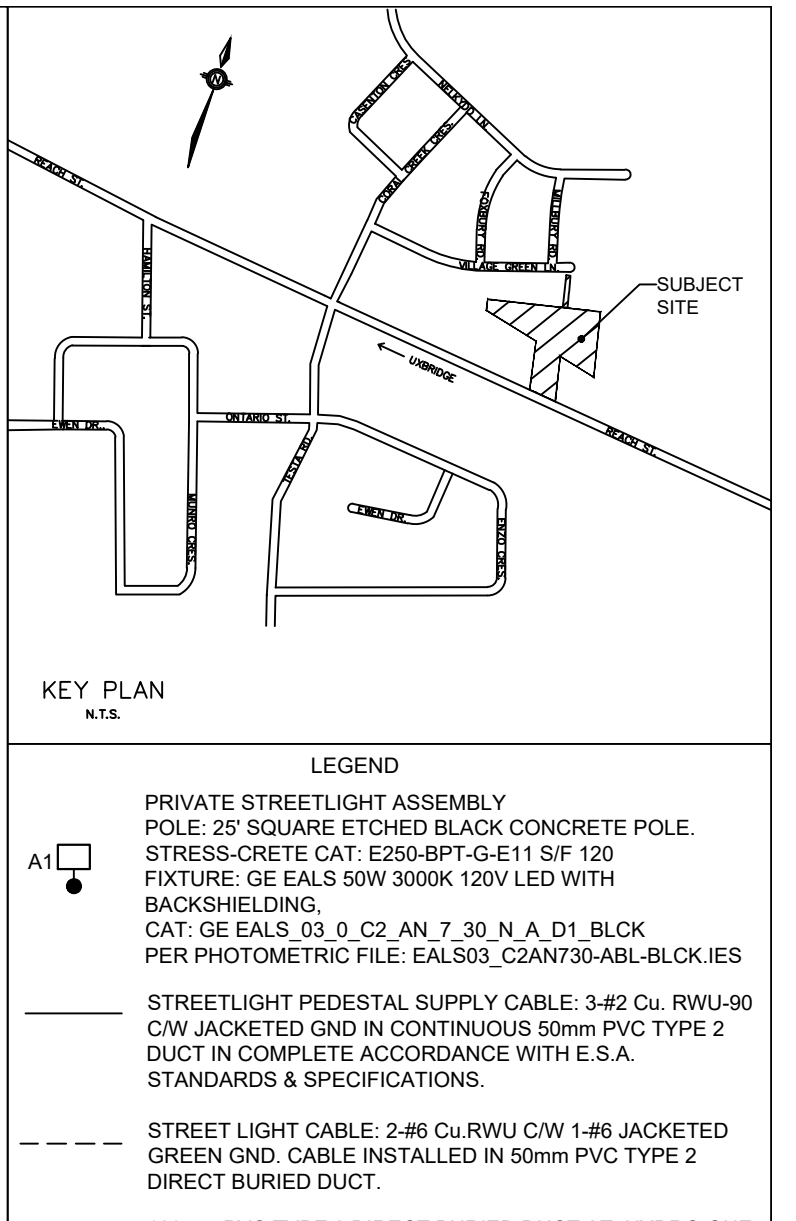
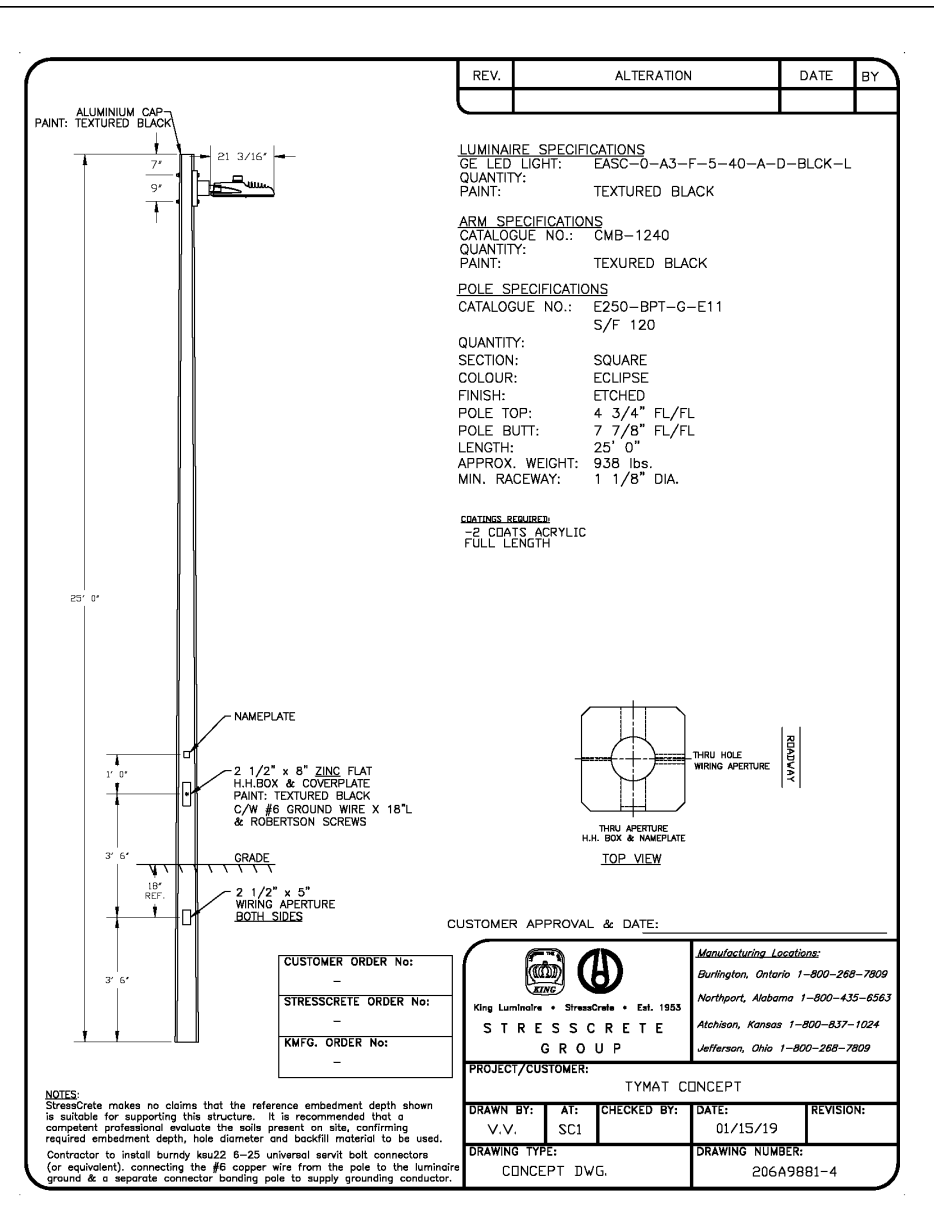


**Ordering Number Logic**  
Evolve® Compact Low Wattage Area Light (EACL)

REV	DESCRIPTION	DATE
01	Issue for Review	2021.08.09
02	Issue for Construction	2021.08.09

**PHOTOMETRIC SUMMARY - TRAVELLED ROADS**

ILLUMINANCE (LLF = 0.9)	AVERAGE	8.7 lux
MINIMUM	0.8 lux	
MAXIMUM	44.9 lux	
UNIFORMITY	AVG/MIN RATIO	10.9:1
PATH	AVERAGE	59.9 lux

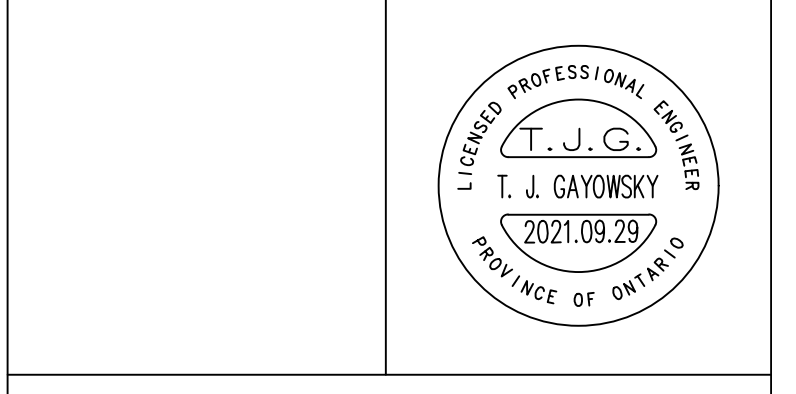


**ACCEPTED TO BE IN GENERAL CONFORMANCE WITH THE TOWNSHIP OF UXBRIDGE STANDARDS. THIS ACCEPTANCE IS NOT TO BE CONSTRUED AS VERIFICATION OF ENGINEERING CONTENT.**

AECOM Canada Ltd.

Date

REV	YYYY.MM.DD	DESCRIPTION	BY	CHECKED
R2	2021.09.29	REVISED PER LATEST CIVIL AND SITE PLAN	T.J.G.	
R1	2021.09.01	REVISED PER LATEST CIVIL AND SITE PLAN	T.J.G.	



**RTG SYSTEMS INC.**  
 ELECTRICAL CONSULTING ENGINEERS  
 3518 Mainway Dr., Suite 201 Office: (905) 335-4470  
 BURLINGTON ON L7M 1A8 Toronto: (905) 627-7887  
 E-MAIL: general@rtgsystems.com

**TOWNSHIP OF UXBRIDGE**

**REACH STREET TOWNHOMES DEVELOPMENT**  
**PHOTOMETRIC ANALYSIS**

DWG BY: T.J.G. DATE: 2021.08.09 CWD BY: DATE: SCALE: 1:500 EXCEPT SYMBOLS DRAWING NO: SHEET 1 OF 1 PHOTO-1