

REV.	ALTERATION	DATE	BY

LUMINAIRE SPECIFICATIONS
 GE LED LIGHT
 EASC-G-A3-F-5-40-A-D-BLCK-L
 QUANTITY: 120
 PAINT: TEXTURED BLACK
ARM SPECIFICATIONS
 CATALOGUE NO.: 348-1240
 QUANTITY: 120
 PAINT: TEXTURED BLACK
POLE SPECIFICATIONS
 CATALOGUE NO.: E250-BPT-G-E11
 QUANTITY: 5/P 120
 SECTION: SQUARE
 COLOUR: ECLIPSE
 FINISH: ETCHED
 POLE TOP: 4 3/4" FL/FL
 POLE BUTT: 7 7/8" FL/FL
 LENGTH: 25' 0"
 APPROX. WEIGHT: 936 LBS
 MIN. RACEWAY: 1 1/8" DIA.
FINISHES REQUIRED
 1. COATS ACRYLIC
 2. FULL LENGTH

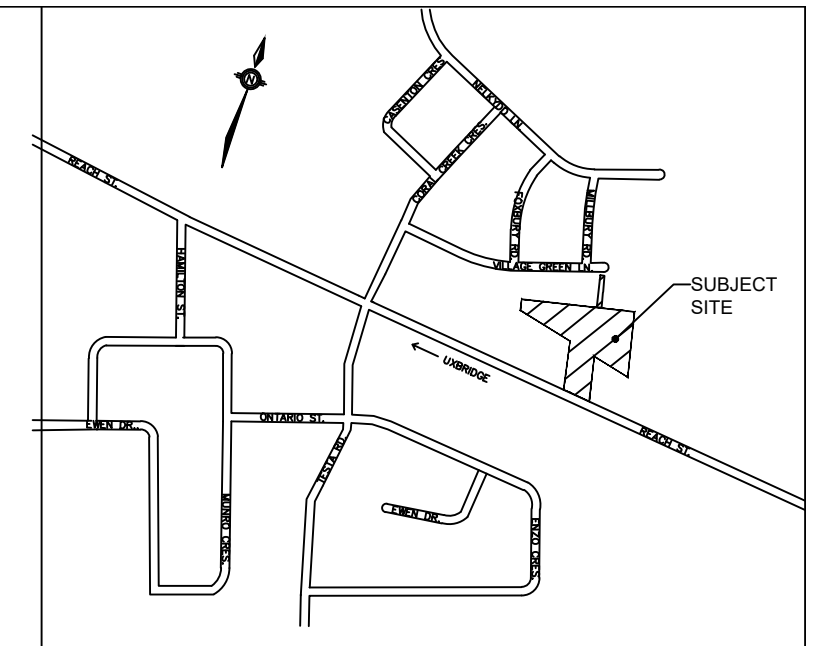
ALUMINUM CAP
 PAINT: TEXTURED BLACK
 2 1/2" x 8" ZINC PLAT
 FLANGE & COVERPLATE
 PAINT: TEXTURED BLACK
 C/W 66 GROUND WIRE x 18L
 & ROBERTSON SCREWS
 2 1/2" x 5" 5/8"
 MINOR APERTURE
 BOTH SIDES

NAMEPLATE
 THIS HOLE
 MINOR APERTURE
 THIS HOLE
 MINOR APERTURE
 TOP VIEW

CUSTOMER APPROVAL & DATE: _____
 CUSTOMER ORDER NO.: _____
 STRESSCRETE ORDER NO.: _____
 DATE ORDER NO.: _____

STRESSCRETE
 G R O U P
 PRODUCTIONS
 TYPAT CONCEPT
 DRAWN BY: Y.V. SCI
 CHECKED BY: T.J.G.
 DATE: 01/15/19
 REVISION: _____
 DRAWING NUMBER: 256A9881-4
 CONCEPT DWG.

NOTES:
 Structural notes on drawings that the reference embedment depth shown is suitable for supporting this structure. It is recommended that a structural professional evaluate the site ground or the existing required embedment depth, hole diameter and socket material to be used. Contractor to install formwork used for 60-90 concrete and not connect to (or equivalent) connecting the #6 rebar into the pole to the foundation ground & a separate concrete footing used to support existing conditions.



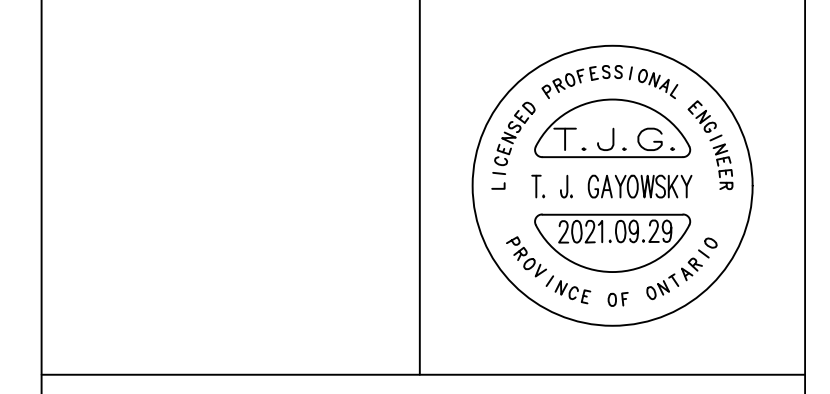
- LEGEND**
- PRIVATE STREETLIGHT ASSEMBLY
POLE: 25 SQUARE ETCHED BLACK CONCRETE POLE.
STRESS-CRETE CAT: E250-BPT-G-E11 S/F 120
FITTURE: GE EALS 50W 3000K 120V LED WITH
BACKSHIELDING.
CAT: GE EALS_03_0_C2_AN_7_30_N_A_D1_BLK
PER PHOTOMETRIC FILE: EALS03_C2AN730-ABL-BLCK-IES
 - STREETLIGHT PEDESTAL SUPPLY CABLE: 3-#2 Cu. RWU-90
C/W JACKETED GND IN CONTINUOUS 50mm PVC TYPE 2
DUCT IN COMPLETE ACCORDANCE WITH E.S.A.
STANDARDS & SPECIFICATIONS.
 - STREET LIGHT CABLE: 2-#6 Cu. RWU C/W 1-#6 JACKETED
GREEN GND CABLE INSTALLED IN 50mm PVC TYPE 2
DIRECT BURIED DUCT.
 - 100mm PVC TYPE 2 DIRECT BURIED DUCT AT HYDRO ONE
CROSSING LOCATION FOR STREETLIGHTING SYSTEM.
DUCT QUANTITIES SHOWN ON THIS PLAN ARE
EXCLUSIVELY FOR THE STREETLIGHTING SYSTEM.
 - METERED HOUSE SERVICE PANEL: 60A 2 POLE MAIN
BREAKER, 2-40 BRANCH BREAKERS, PROVISION FOR UP TO
6 BRANCH BREAKERS TO BE LOCATED WITHIN WATER
METER ROOM. INSTALLATION BY BUILDERS SITE
ELECTRICIAN.
 - GROUND ROD TO BE INSTALLED PER E.S.A. AND
TOWNSHIP OF UXBRIDGE STANDARDS AND
SPECIFICATIONS.
 - PROPOSED TRANSFORMER LOCATION
 - DRIVEWAY

ACCEPTED TO BE IN GENERAL
CONFORMANCE WITH THE TOWNSHIP OF
UXBRIDGE STANDARDS. THIS
ACCEPTANCE IS NOT TO BE CONSTRUED
AS VERIFICATION OF ENGINEERING
CONTENT.

AECOM Canada Ltd.

Date

REV	YYYY.MM.DD	DESCRIPTION	BY	CHECKED
R2	2021.09.29	REVISED PER LATEST CIVIL AND SITE PLAN	T.J.G.	
R1	2021.09.01	REVISED PER LATEST CIVIL AND SITE PLAN	T.J.G.	



RTG SYSTEMS INC.
 ELECTRICAL CONSULTING ENGINEERS
 3518 Mainway Dr., Suite 201
 Burlington, ON L7M 1A8
 E-MAIL: general@rtgsystems.com
 Office: (905) 335-4470
 Toronto: (905) 627-7887

TOWNSHIP OF UXBRIDGE

**REACH STREET TOWNHOMES
DEVELOPMENT
LIGHT TRESPASS ANALYSIS**

DWG BY: T.J.G.	DATE: 2021.08.09	CR'D BY:	DATE:
SCALE: 1:500 EXCEPT SYMBOLS	DRAWING NO:	SHEET 1 OF 1	TRESPASS-1